

THE  SPEN

ABOVE IT ALL



THE  SPEN  
ABOVE IT ALL

Varied with myriad hues  
Splendid & inspiring  
Magnificent and grand like none  
Ever giving and comforting  
Just like Aspen  
In other words, above it all

## Whiteland Corporation : Elevating Lifestyle

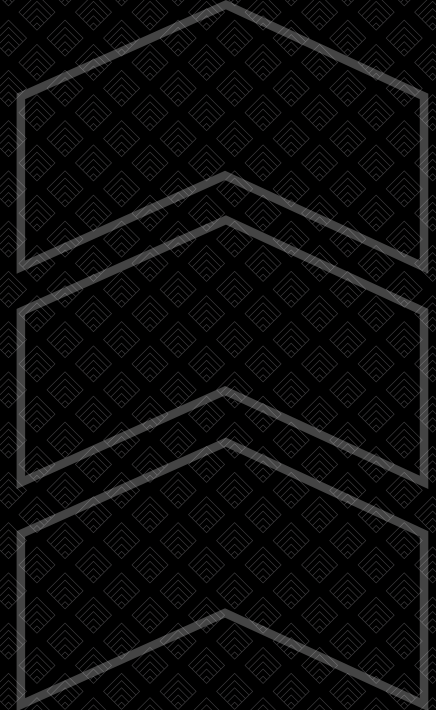
Since its inception, Whiteland Corporation has been re-defining the real-estate vertical.

Harnessing its rock-solid experience and the desire to go that extra mile, it has been in relentless pursuit of offering buyers a luxurious living and lifestyle.

Embedded in its core principles; trust, commitment and transparency, from design to architecture, sustainability to amenities, the company has single-handedly created a new buyer set looking for an elevated lifestyle.

Headquartered in Gurugram, the company is committed to deliver an accentuated lifestyle, creating a well-defined eco-system and giving buyers more than they expect.

## Global Outlook - Indian Values



## You, Our Inspiration

We understand your latent desire to be caressed by luxury, to lead an inspired living.

Following the same, we decided crafting a world that echoes your dreams, desires and aspirations, a world offering unblemished living and momentous experiences...

A life above it all

*above it all*



## City Spirit - Aravalli Serenity

What good is a world if it does not pamper you with unapologetic lifestyle and choices?

Presenting, The Aspen, a uniquely crafted luxurious offering.

With curated amenities, end-to-end extravagance, the experience is heightened by the pristine serenity of the imposing Aravallis.

Nestled in the most promising sector of Gurugram, Sector 76, it offers a lifestyle that is unheard of & truly inspiring.



## Amidst Throb & Action

Claiming a majestic presence on the SPR, with its proximity to NH 8, Cloverleaf flyover and Dwarka expressway. It keeps you well-connected.

It also offers you a vast expansive, unadulterated view of the coveted Leopard Trail as well as of Gurugram's skyline.



- 21 acres of sustainable living
- 8 majestic towers
- Two to a core apartment
- 1 lakh sq feet of world-class clubhouses (approx)
- World-class amenities
- Vastu-compliant architecture
- Magnificent view of the Aravallis
- Expansive view of the Leopard Trail



3 BHK  
242 Units

4 BHK  
184 Units

Penthouses  
15 Units

Clubhouse Space  
1 Lakh Sq Ft (Approx)

Retail Area  
20,000 Sq ft ( Approx )

Green Belt  
17 Acres (Approx)

# Configurations

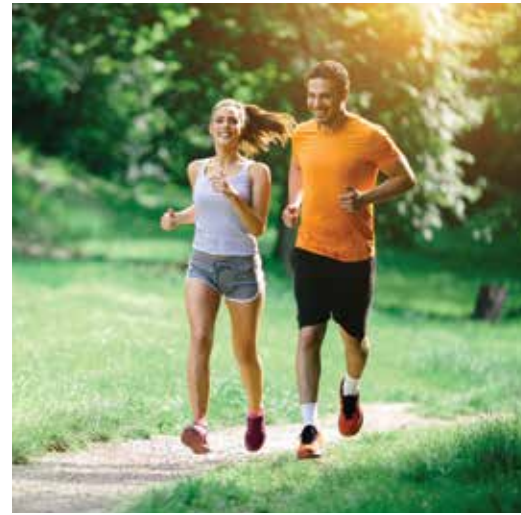
# Plethora Of Activities Heightened Living



Meditation Deck  
Linear Park  
Cycling Track



Senior Citizen Zone  
Kid's Play Area  
Yoga Decks  
Pet's Play Zone  
Lap Pool  
Leisure Pool  
Exotic Waterbodies



Basketball Court  
Tennis Court  
Cricket Net  
Badminton Court  
Squash Court  
Indoor Games  
Multi-Functional Gymnasium



Themed Restaurant  
Banquet Hall  
Business Centre  
Retail  
Cafes  
Library





# Splendour + Entertainment + Lifestyle

## The 3x Edge

Seldom does a world offer you as many choices as The Aspen.

For you, it presents two world-class club facilities that define affluence and lifestyle.

Aurora; with a sunken pool it sets the stage for unparalleled pampering.

Sol; extending its aura and charm via its curated services & gastronomical delight.

Choose one, or both to suit your moods.





*Aurora*

Varied Facilities, Unmatched Magnificence



## Extravagantly Luxurious

Amenities

Multi-functional Gym Pool Side Cafe & Library Spa





*Sol*

Sunken Architecture & Serenading Waterbodies





# Striking Affluence

Amenities

Gym Banquet Hall Private Theatre Squash & Badminton Court

Luxury Retail VIP Lounge Meeting Room

Magnificent Drop-Offs





Imposing Entrance Lobby



## Splendid, Spacious & Welcoming

- Vastu-compliant architecture
- Optimum space utilization
- VRV air-conditioning





## Exuberant & Lavish

World-class amenities  
Top-of-the-line fixtures and fittings

Mesmerising View,  
Abundant Greenery

2 apartments per floor

Unhindered view of the Aravallis &  
cityscape





# Always Close

NH8  
< 500 meters



Golf Course  
<10 mins



Airport  
<22 mins



Cybercity  
<12 mins



Cinema Theatre  
< 5-7 mins



Mall  
< 5 mins



Hospital  
< 10 mins

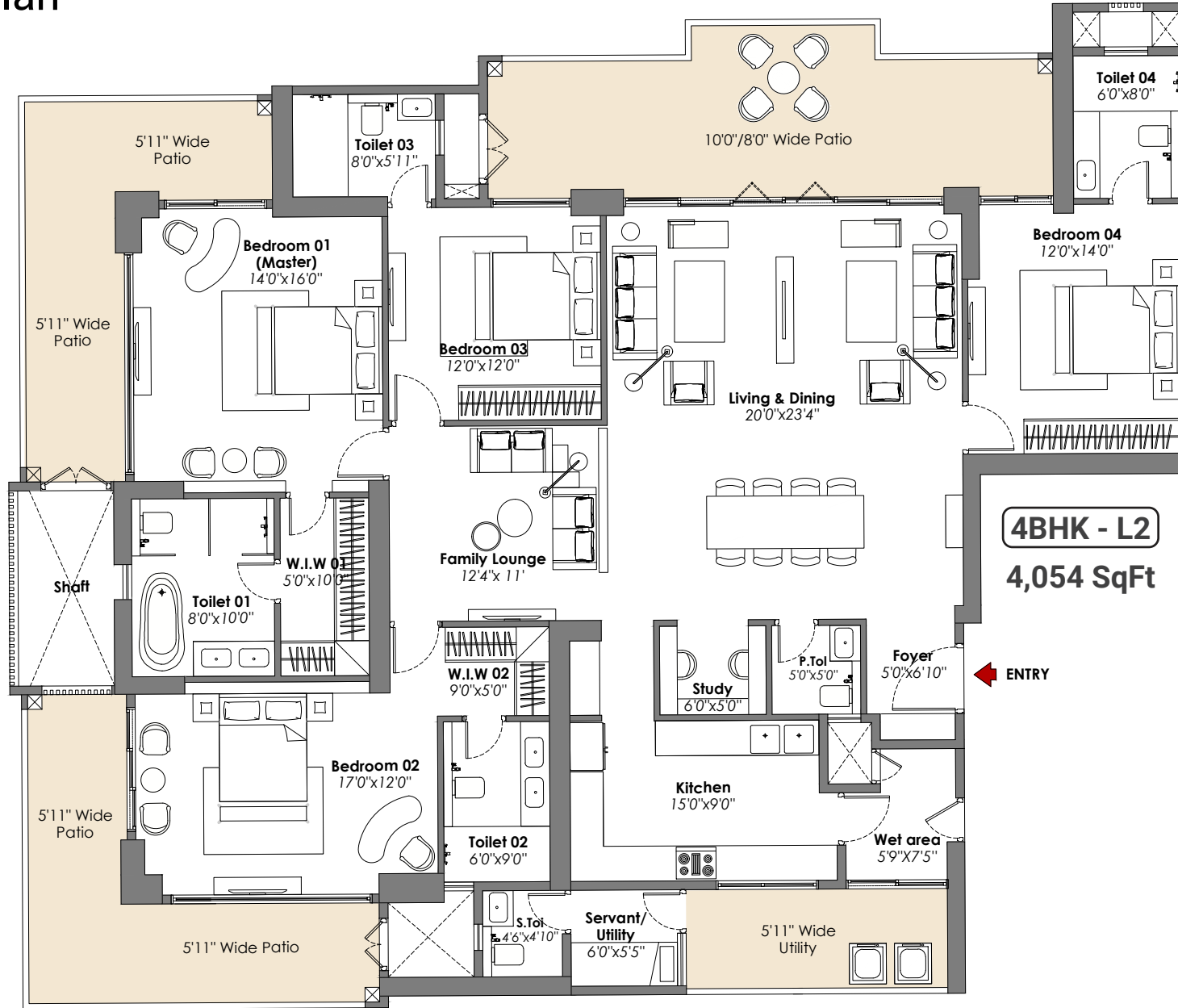


School  
< 10 mins



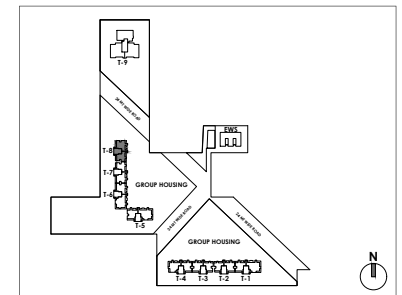
# T8

## Typical Floor Plan



**4BHK - L2**  
**4,054 SqFt**

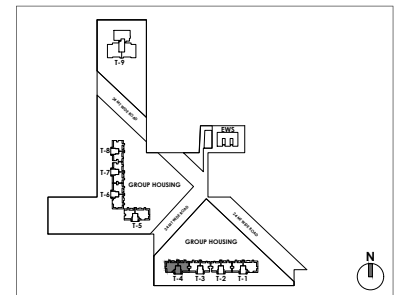
ENTRY



SITE KEY PLAN

# T4

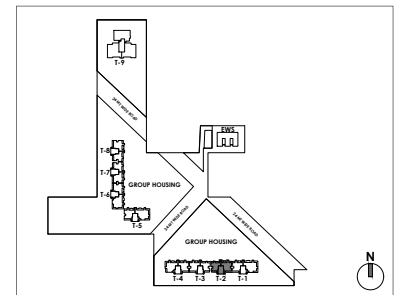
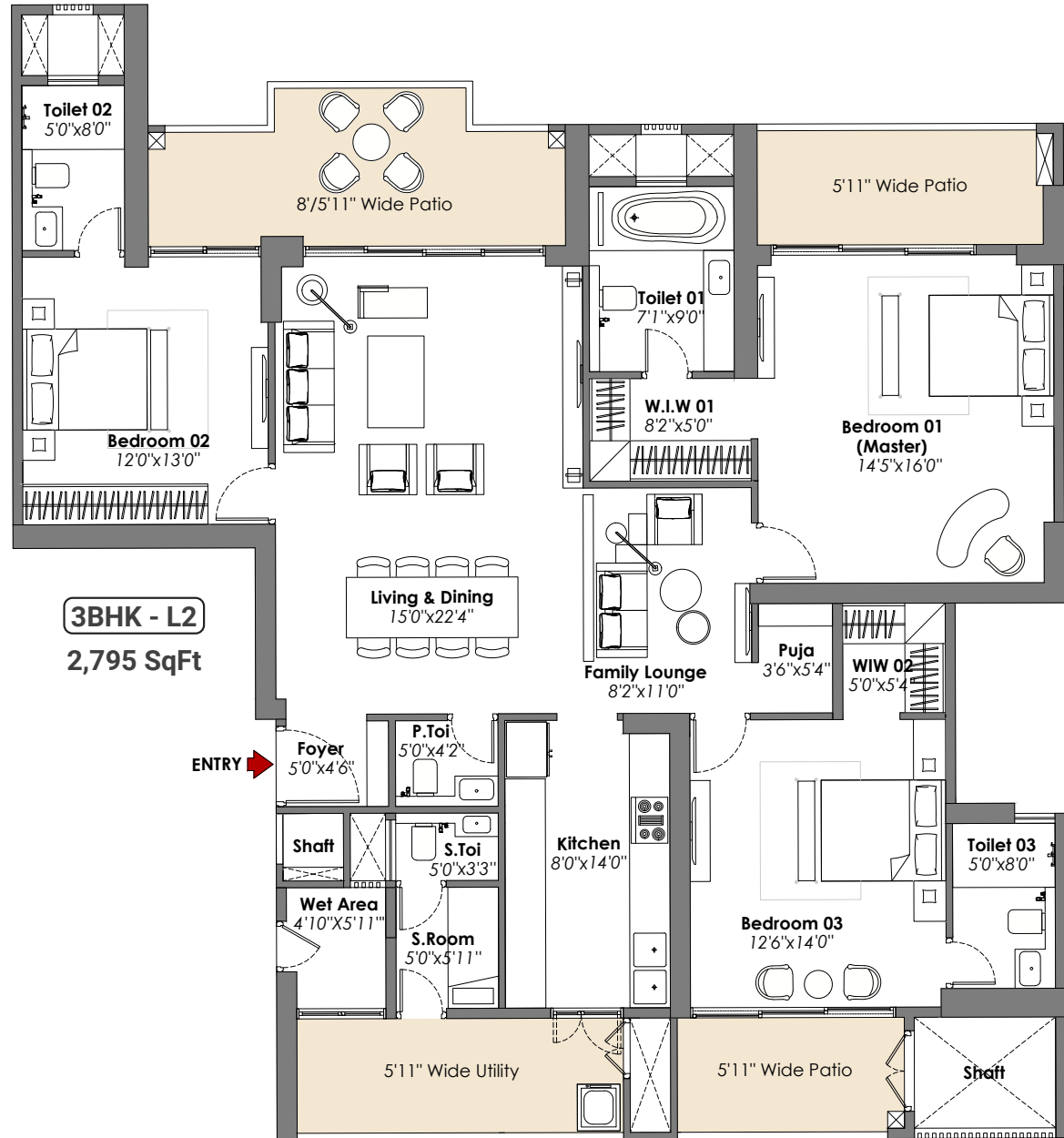
## Typical Floor Plan



SITE KEY PLAN

# T2

## Typical Floor Plan



Principle Design  
Consultant



**Architect  
Hafeez  
Contractor**

Construction  
Partner



Landscape Architect



Top-Of-The-Line Consultants

# Group Consultant



# Structural Engineering



# MEP Consultants



# Traffic Consultant



Top-Of-The-Line Consultants

# Specifications

	Flooring	Walls	Ceiling	Dado	Counter Top	Door	Windows/ Glazing	Fitting & Fixtures	Electricals/ HVAC/Security & Surveillance	Other Miscellaneous
Living/Dining	Imported marble	Acrylic emulsion paint on POP punning/ gypsum	Acrylic emulsion paint on POP punning with corner gypsum boxing false ceiling							
Master Bedroom/ Dress Room	Laminated wooden flooring/Marble.	Acrylic emulsion paint finish	Acrylic emulsion paint on POP punning with corner gypsum boxing false ceiling							
Bedrooms	Laminated wooden flooring/Tiles	Acrylic emulsion paint finish	Acrylic emulsion paint on POP punning with corner gypsum boxing false ceiling						Modular switches of North-west/ crabtree/MK or equivalent make, copper wiring, ceiling fans in all rooms except toilets and ceiling light fixtures in balconies	Modular wardrobes of standard make in bedrooms except in s.room
Utility Room/ balcony/toilet	Tiles of standard make	Oil-bound paint finish and anti-skid floor & tiles on the walls	Oil bound paint finish			Main door: Polished solid core moulded skin door / flush doors. Internal doors: polish moulded skin doors/ flush doors	Energy efficient double glass/single, tinted/ reflective/ clear glass with UPVC frames in all habitable areas	Conventional CP fittings & sanitary ware	100% DG power back up.	
Kitchen	Marble/premium quality tiles	Acrylic emulsion paint	Acrylic emulsion paint on ceiling/ false ceiling	Premium quality tiles 2ft above counters	Marble/ granite/ synthetic stone		Single pinhead/ tinted/ clear glass in all toilets & utility rooms	Premium quality CP fittings and sink with drain board	Secured gated community with access control systems, CCTV in all areas	Modular kitchen with hob, chimney, oven, microwave, dishwasher, refrigerator, washing machine of reputed manufacturer & make
Master Toilets/other toilets	Marble/premium quality tiles	Marble/ premium quality tiles/mirror	Acrylic emulsion paint on ceiling/ false ceiling	Premium quality tiles upto door height	Marble/ granite/ synthetic stone			Towel rail, toilet paper holder, robe hooks, single lever CP fittings, health faucet, wash basin & EWC	One intercom point in each apartment. Fire fighting system with sprinklers, smoke detector system etc as per NBC norms	Bath tub in master bedroom. Single lever fittings, CP fittings, wash basin, floor mounted/wall-hung WC of Kohler/Roca/Duravit/ Parryware or equivalent make
Front Balcony	Anti-skid tiled floor	Exterior grade paint	Oilbound paint finish							
Rear Balcony	Anti-skid tiled floor	Exterior grade paint	Oilbound paint finish						VRV air conditioning system inside apartment excluding kitchen, toilet & servant room	
Staircase & Lift Lobby	Stairs: Terrazo/mosaic tiles/marble/kota stone. Lift lobby floors: Combination of granite/marble/tiles	Enamel paint & OBD	-							CPVC & UPVC piping for water supply inside the toilet & kitchen and in the vertical downtakes.



Disclaimer: All information, images and visuals or sketches including landscaping shown in this advertisement are only an architect's impression, representative images, or artistic renderings and not to scale. Nothing contained herein intends to constitute a legal offer and does not form part of any legally binding agreement and/or commitment of any nature. The company endeavours to keep the information up to date and correct. Recipients/ viewers are advised to exercise their discretion in relying on the information shown/ provided and are requested to verify all the details, including area, amenities, services, terms of sales, payments, price, and other relevant terms independently with the sales team/ company, have a thorough understanding of the same and take appropriate advice prior to concluding any decision for buying any unit(s) in the project. [www.wlcorp.com](http://www.wlcorp.com) | HARERA No.: 7 of 2023 Dated: 12.01.2023 | License no. 91 & 92 of 2022.  
\* 1 Hect. = 2.471 Acres, 1 Acre = 4840 sq. yds. or 4046.86 sq. mtrs., 1 sq. mtr. = 10.764 sq.ft.

WHITELAND  
THE  SPEN

ABOVE IT ALL

Corporate Office: Whiteland Corporation Private Limited  
10<sup>th</sup> & 11<sup>th</sup> Floor, Tower 1, Worldmark, Sector - 65, Gurugram, 122001

[www.wlcorp.com](http://www.wlcorp.com)