



SOBHA

PASSION AT WORK

# Floor Plans Vista Grande Residences Tower Z2

**SOBHA  
CITY**

Chintels Metropolis, Sector-108

**TYPE G1**  
**3, 5, 7, 9, 11, 13, 15 & 17<sup>TH</sup> Floor**

3 Bedroom Residences with Family Lounge  
 Saleable Area - 192.68 SQM (2073 SFT)  
 Carpet Area - 125.25 SQM (1348 SFT)



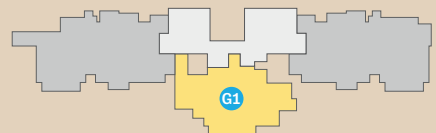
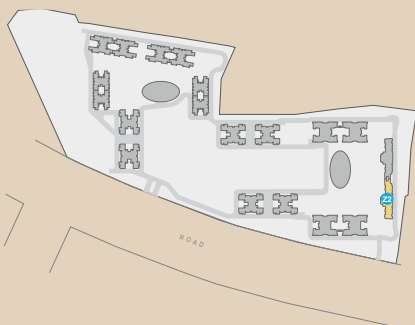
- Living and Dining
- Family Lounge
- Kitchen with Utility Space
- 3 Bedrooms
- 2 Balconies
- 3 Bathrooms



All dimensions in mm

Key plan

SBA & Carpet Area rounded up to to the nearest whole number



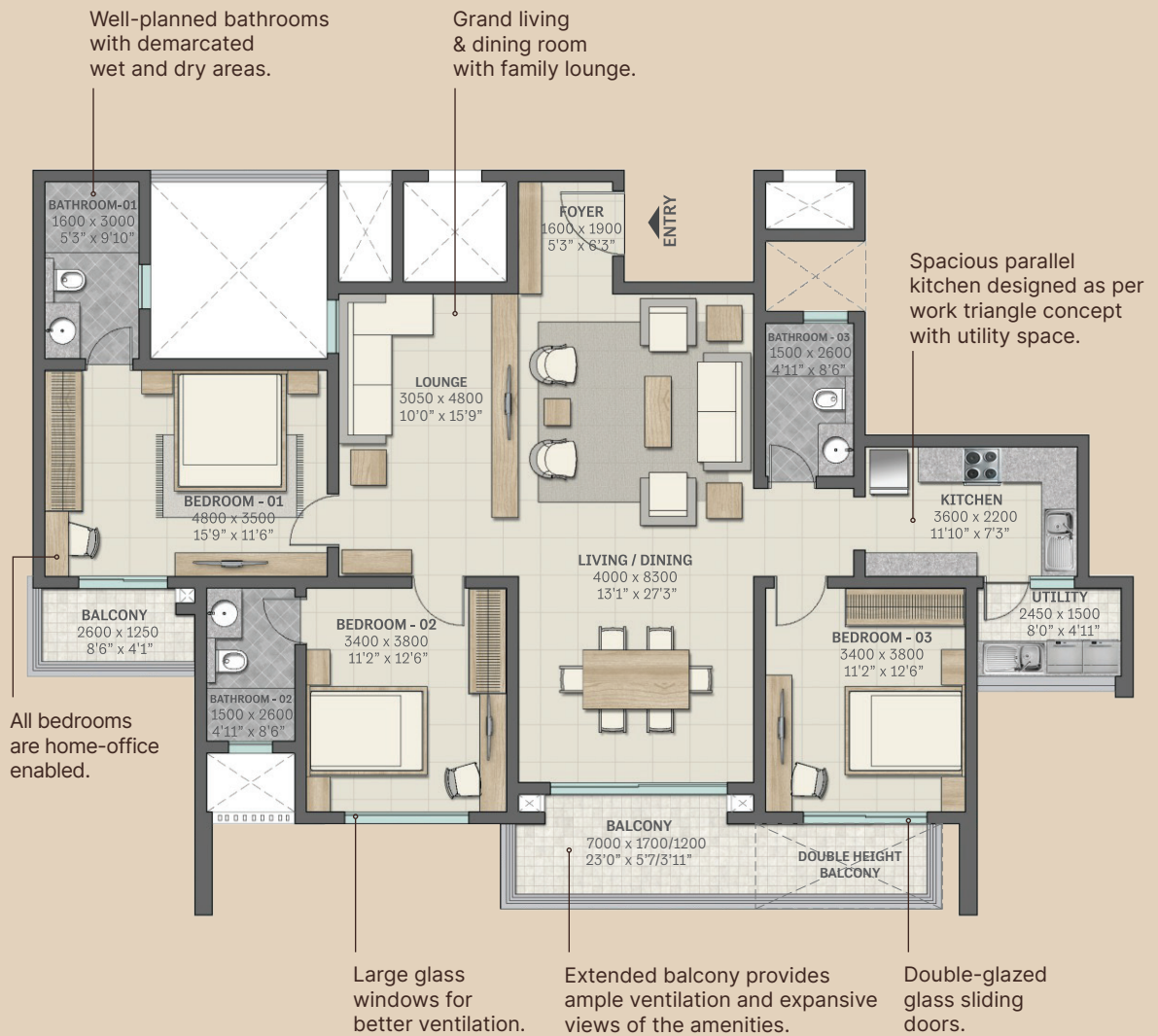
## TYPE G2

2, 4, 6, 8, 10, 12, 14, 16 & 18<sup>TH</sup> Floor

3 Bedroom Residences with Family Lounge

Saleable Area - 192.68 SQM (2073 SFT)

Carpet Area - 125.25 SQM (1348 SFT)



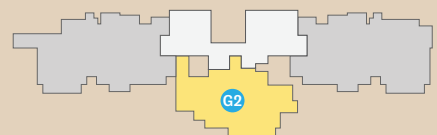
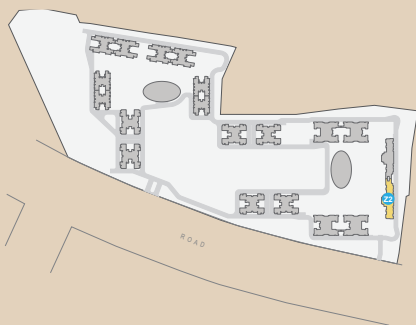
- Living and Dining
- Family Lounge
- Kitchen with Utility Space
- 3 Bedrooms
- 2 Balconies
- 3 Bathrooms



All dimensions in mm

Key plan

SBA & Carpet Area rounded up to to the nearest whole number

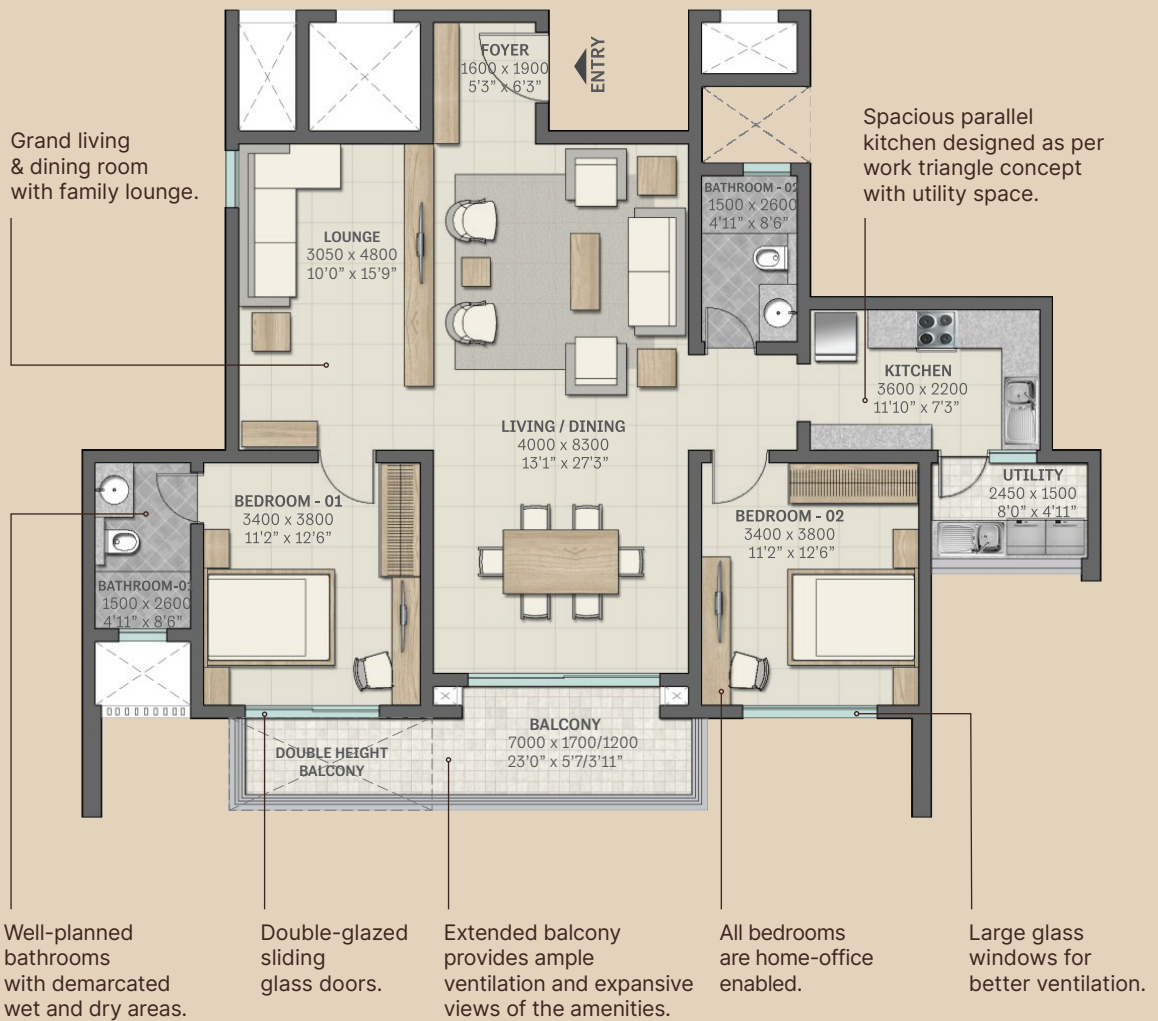


# TYPE G3 1<sup>ST</sup> Floor

2 Bedroom Residences with Family Lounge

Saleable Area - 157.25 SQM (1692 SFT)

Carpet Area - 102.51 SQM (1103 SFT)



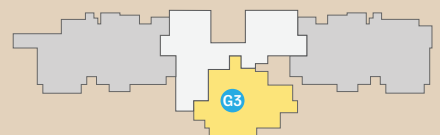
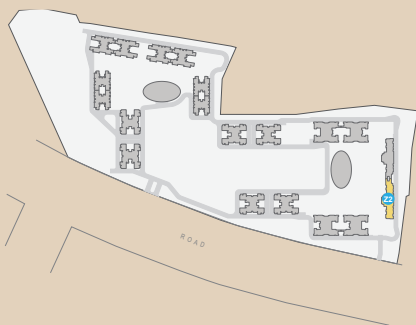
- Living and Dining
- Family Lounge
- Kitchen with Utility Space
- 2 Bedrooms
- 1 Balcony
- 2 Bathrooms



All dimensions in mm

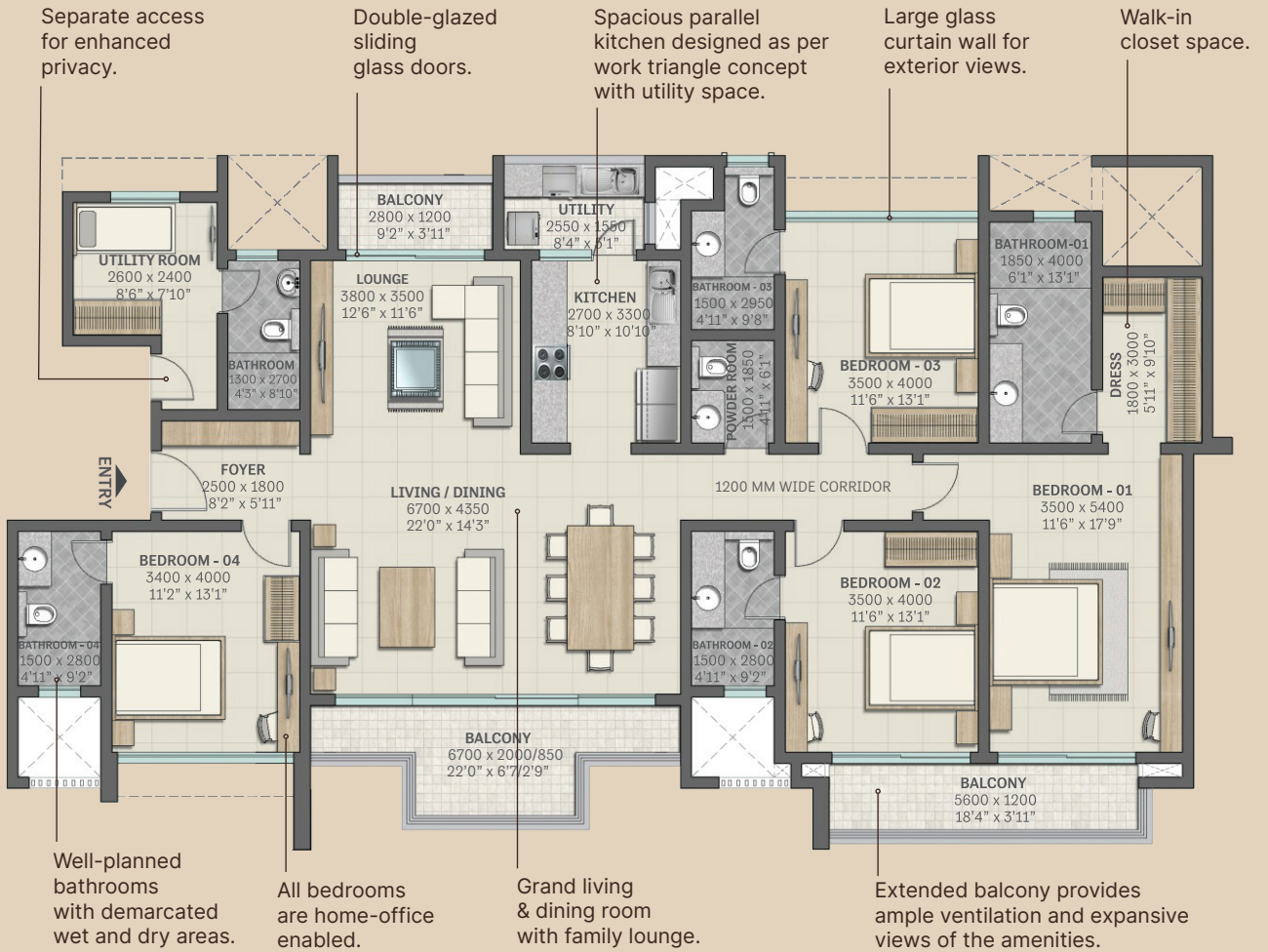
Key plan

SBA & Carpet Area rounded up to to the nearest whole number



**TYPE H1**  
1 to 18<sup>TH</sup> Floor

4 Bedroom Residences with Family Lounge & Utility Room  
 Saleable Area - 269.55 SQM (2901 SFT)  
 Carpet Area - 177.60 SQM (1911 SFT)



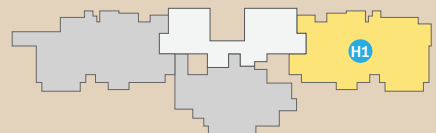
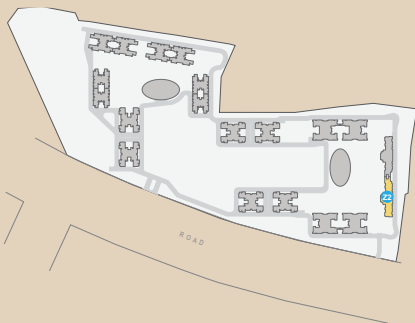
- Living and Dining
- Family Lounge
- Kitchen with Utility Space
- Utility Room with Bathroom
- 4 Bedrooms
- 3 Balconies
- 4 Bathrooms
- Powder Room



All dimensions in mm

Key plan

SBA & Carpet Area rounded up to to the nearest whole number



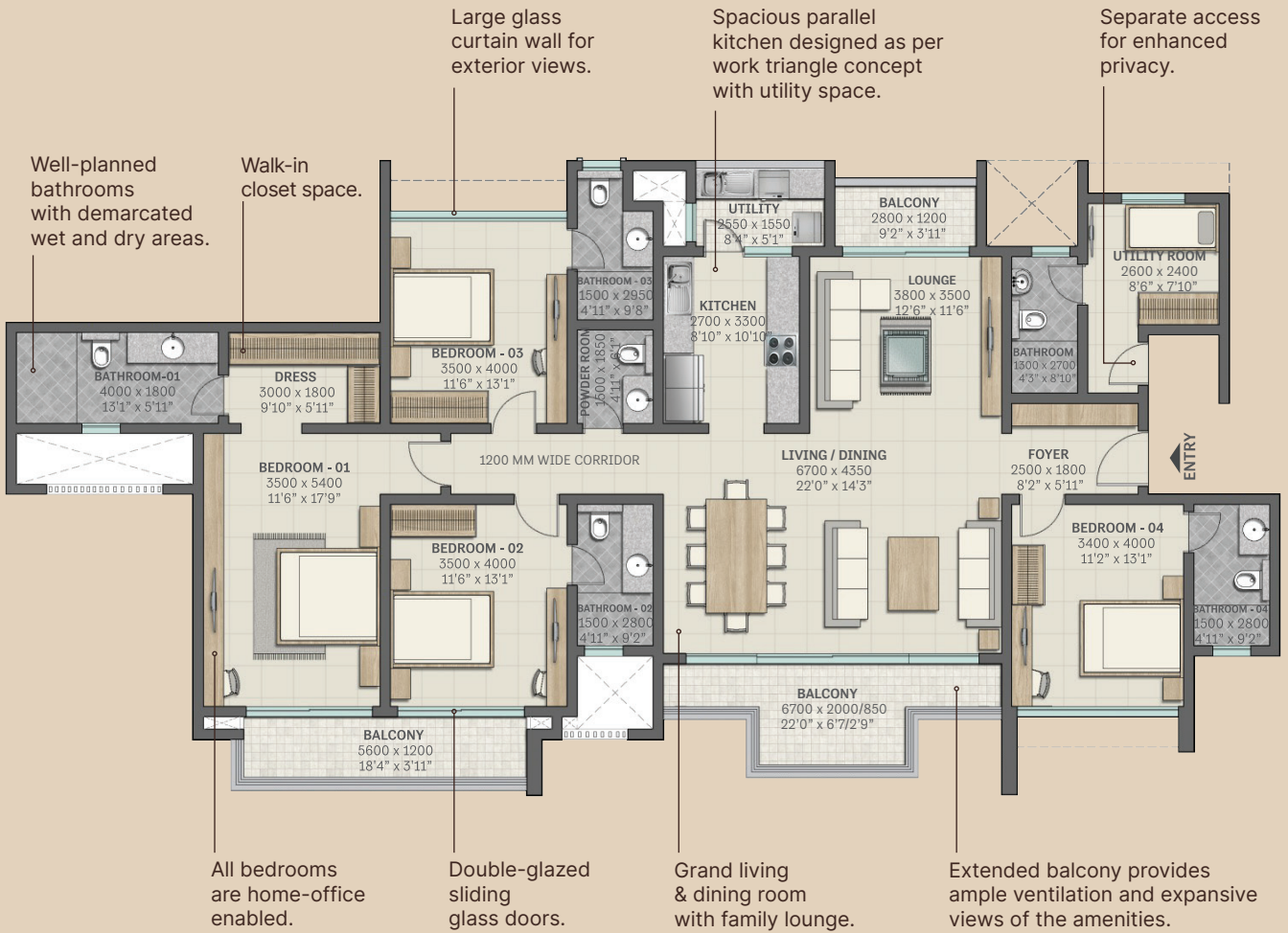
# TYPE H2

1, 2, 3, 5, 6, 8, 9, 11, 12, 14, 15, 17 & 18<sup>TH</sup> Floor

4 Bedroom Residences with Family Lounge & Utility Room

Saleable Area - 270.66 SQM (2913 SFT)

Carpet Area - 176.55 SQM (1900 SFT)



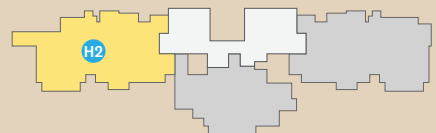
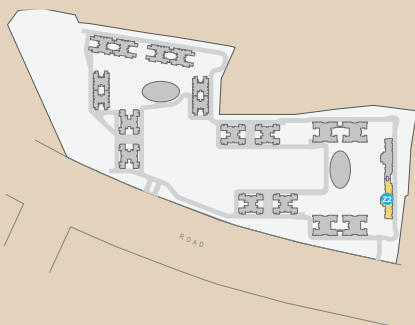
- Living and Dining
- Family Lounge
- Kitchen with Utility Space
- Utility Room with Bathroom
- 4 Bedrooms
- 3 Balconies
- 4 Bathrooms
- Powder Room



All dimensions in mm

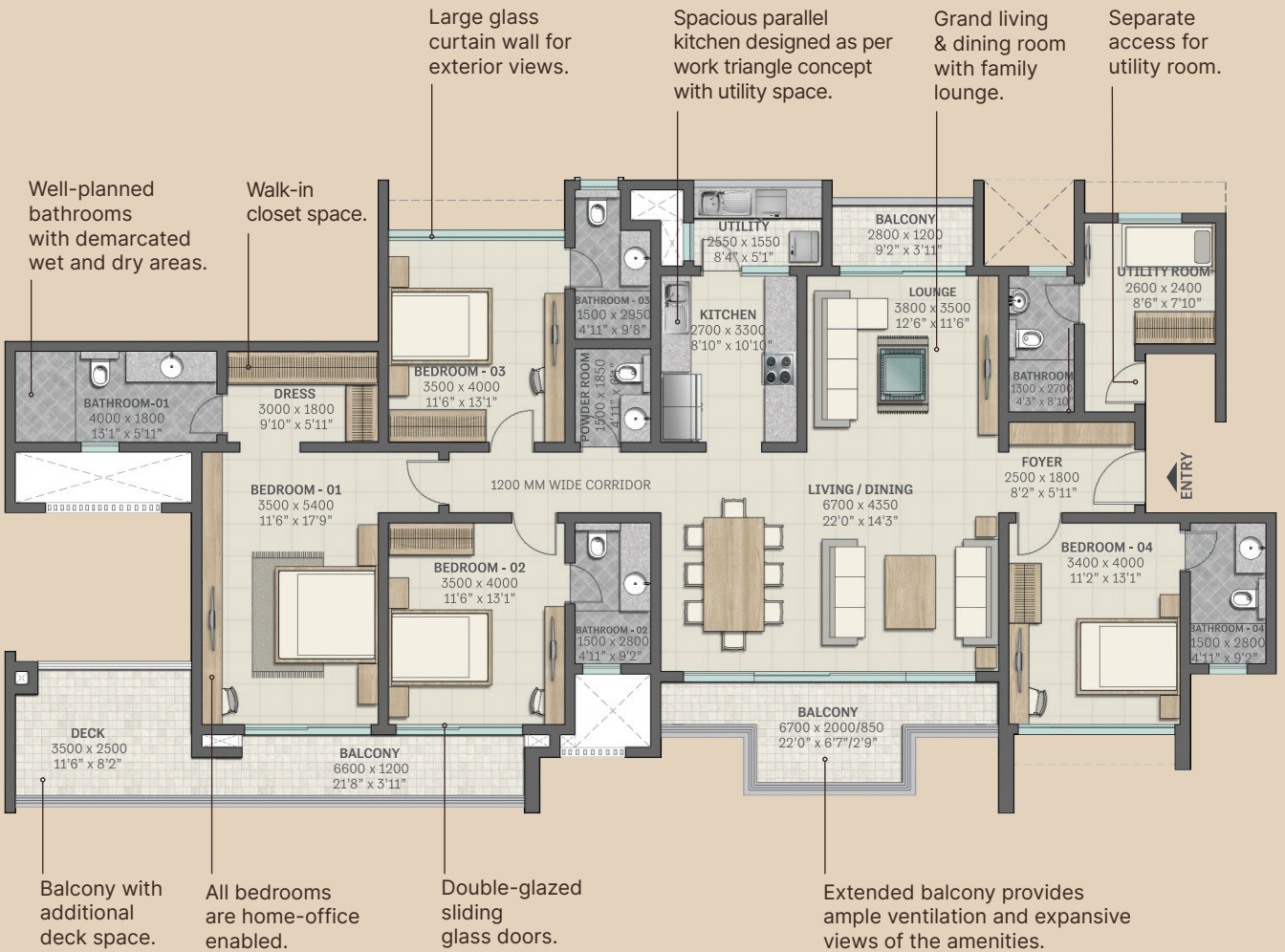
Key plan

SBA & Carpet Area rounded up to to the nearest whole number



**TYPE H3**  
**4, 7, 10, 13, 16<sup>TH</sup> Floor**

4 Bedroom Residences with Family Lounge & Utility Room  
 Saleable Area - 275.28 SQM (2963 SFT)  
 Carpet Area - 176.55 SQM (1900 SFT)



- Living and Dining
- Family Lounge
- Kitchen with Utility Space
- Utility Room with Bathroom
- 4 Bedrooms
- 3 Balconies
- 4 Bathrooms
- Powder Room



All dimensions in mm

Key plan

SBA & Carpet Area rounded up to to the nearest whole number

