



FLOOR PLANS

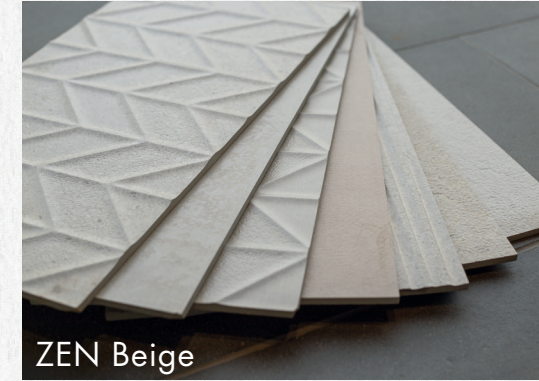


Waterfall residences give you a plethora of possibilities that caters to your lifestyle and needs. There are 30 types of apartment units with varied options.

COLOUR SELECT



IKI Grey



ZEN Beige

1. Select

- Colour : Grey/Beige
- Kitchen : Open/Closed
- S Room : Servant/Study/Store

2. Paid Add-Ons

Three-tiered packages with additional fixtures including wardrobe, vanity, light fixtures etc.

KITCHEN SELECT



Open Kitchen



Closed Kitchen

S ROOM SELECT



Servant Room



Study Room

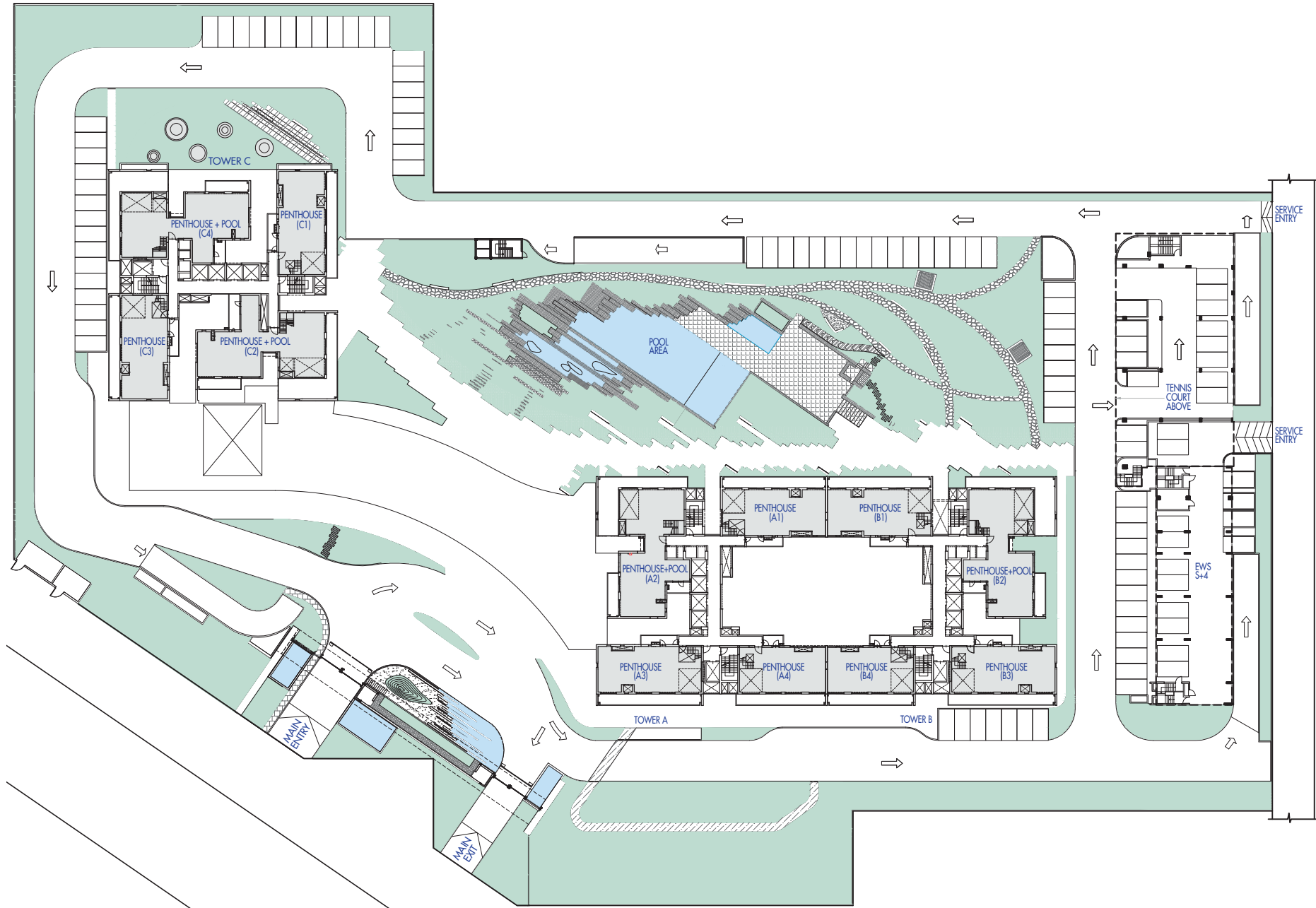


Store Room

SITE PLAN WITH TYPICAL FLOOR PLAN

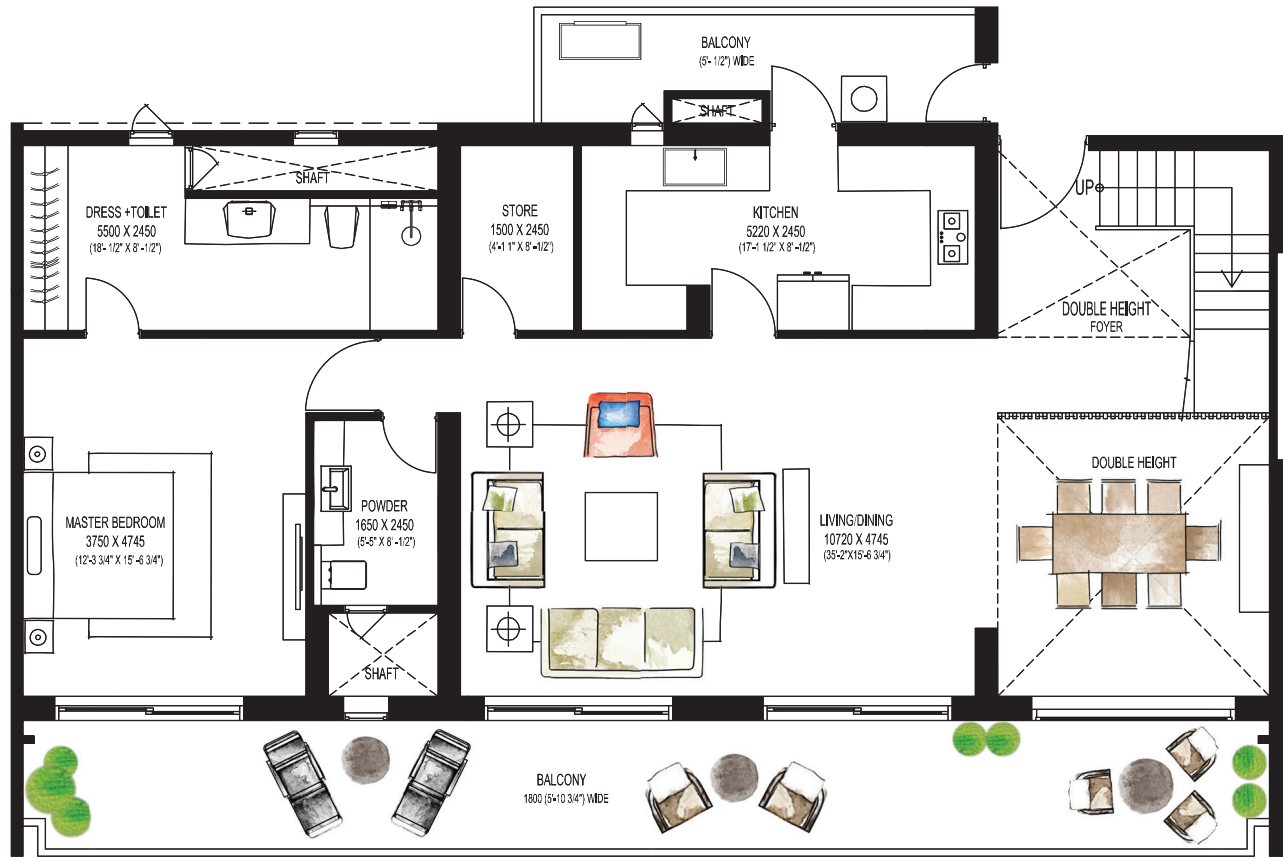
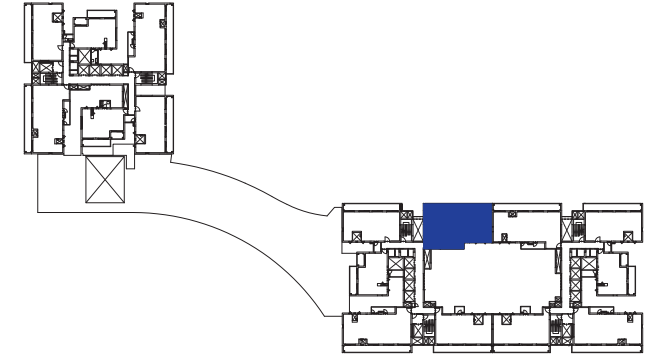
A stylized logo consisting of three vertical, wavy, flame-like shapes in a light gray color, positioned centrally between the text 'SITE PLAN WITH' and 'TYPICAL FLOOR PLAN'.



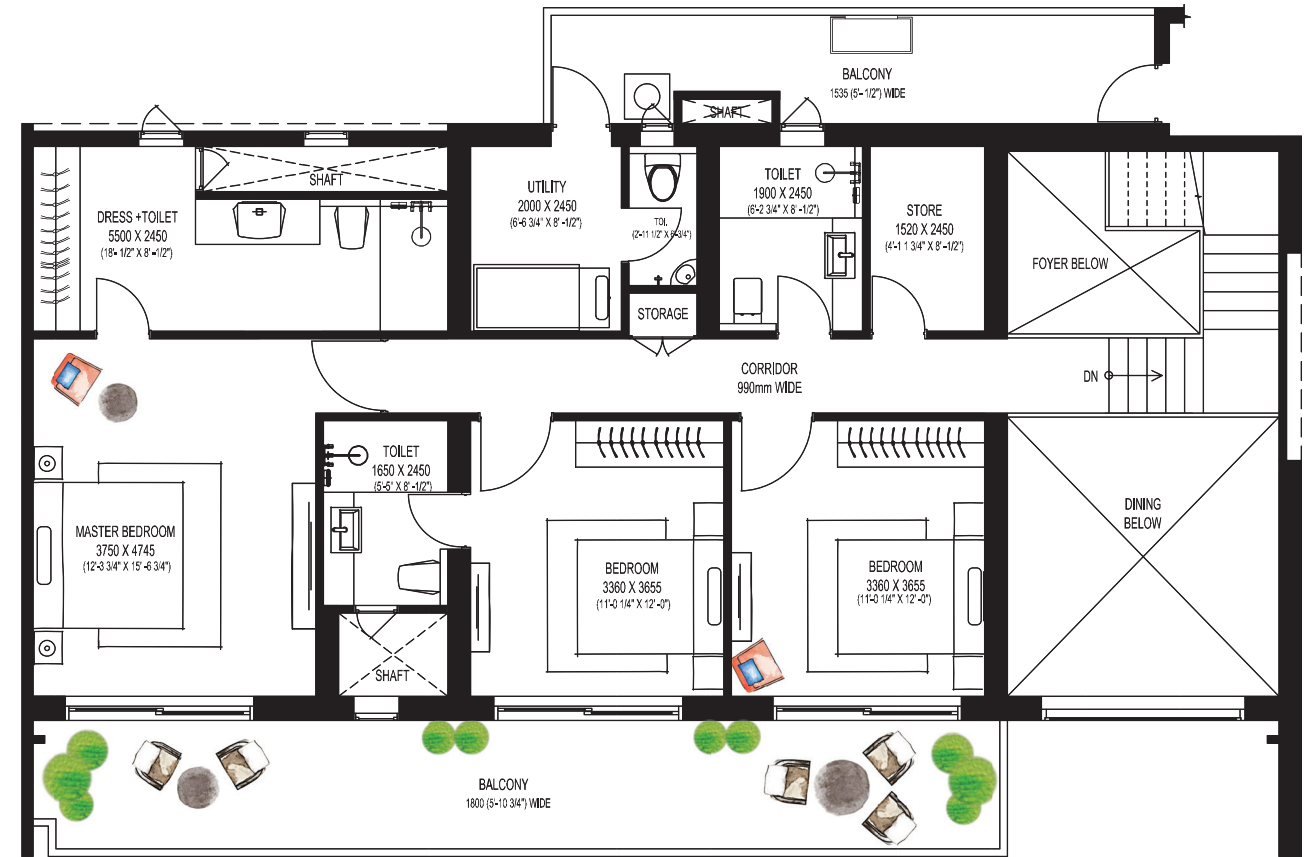


PENTHOUSE(A 1)

Carpet Area 2247.95 Sq. Ft (208.84 Sq. Mtr)
 Exclusive Area 3355.68 Sq. Ft (311.75 Sq. Mtr)
 Saleable Area 4429.50 Sq. Ft (411.51 Sq. Mtr)



LOWER FLOOR PLAN



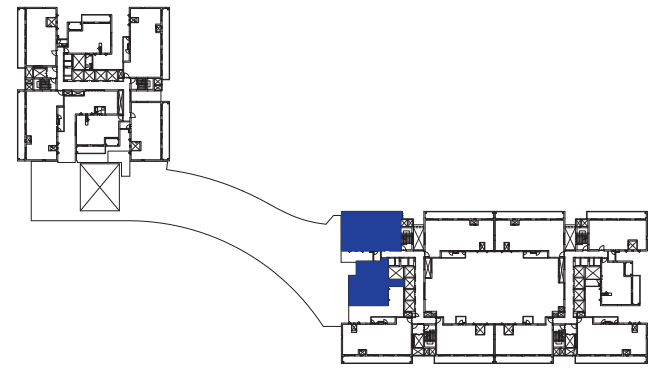
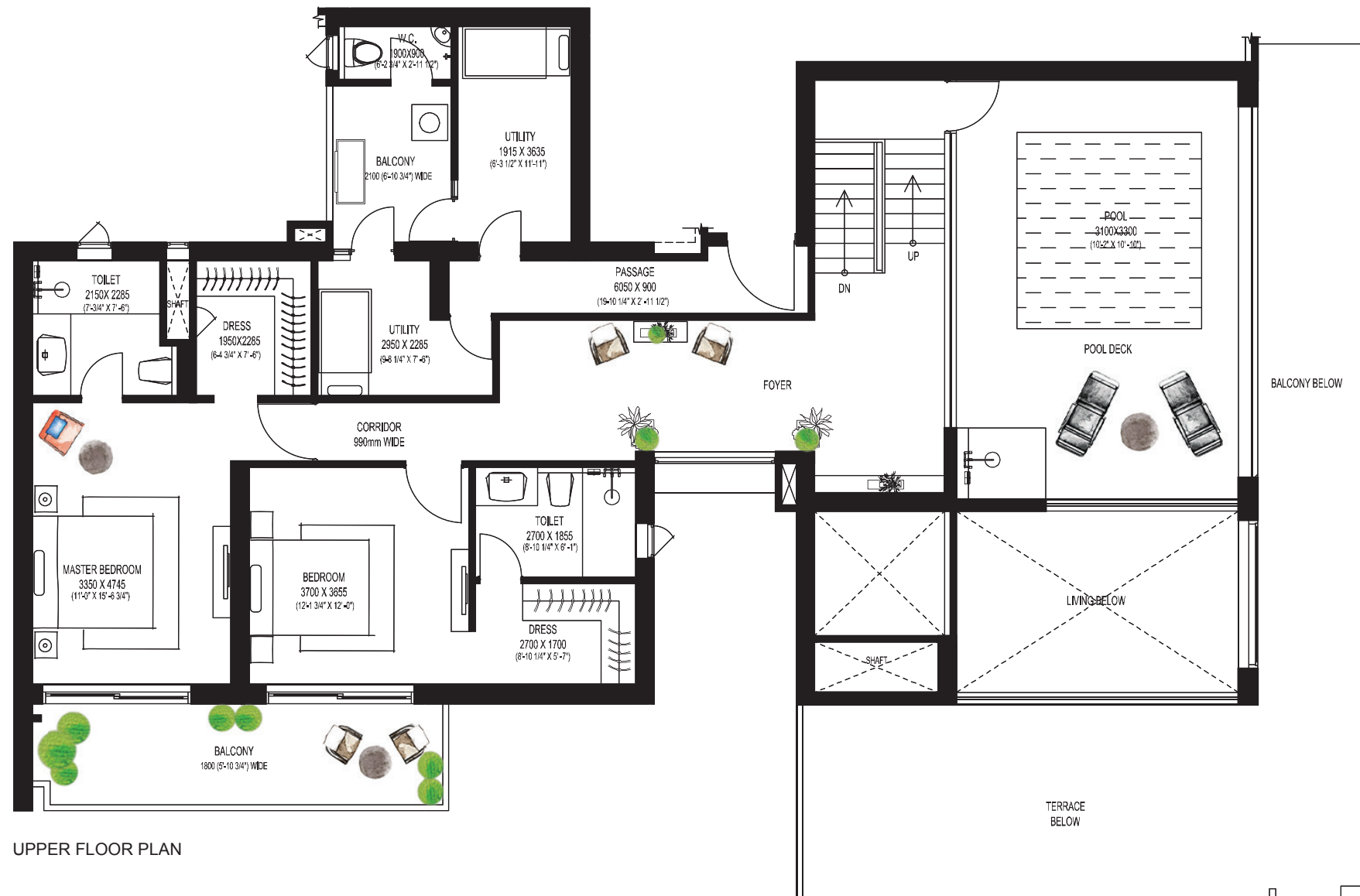
UPPER FLOOR PLAN

PENTHOUSE+POOL(A2)

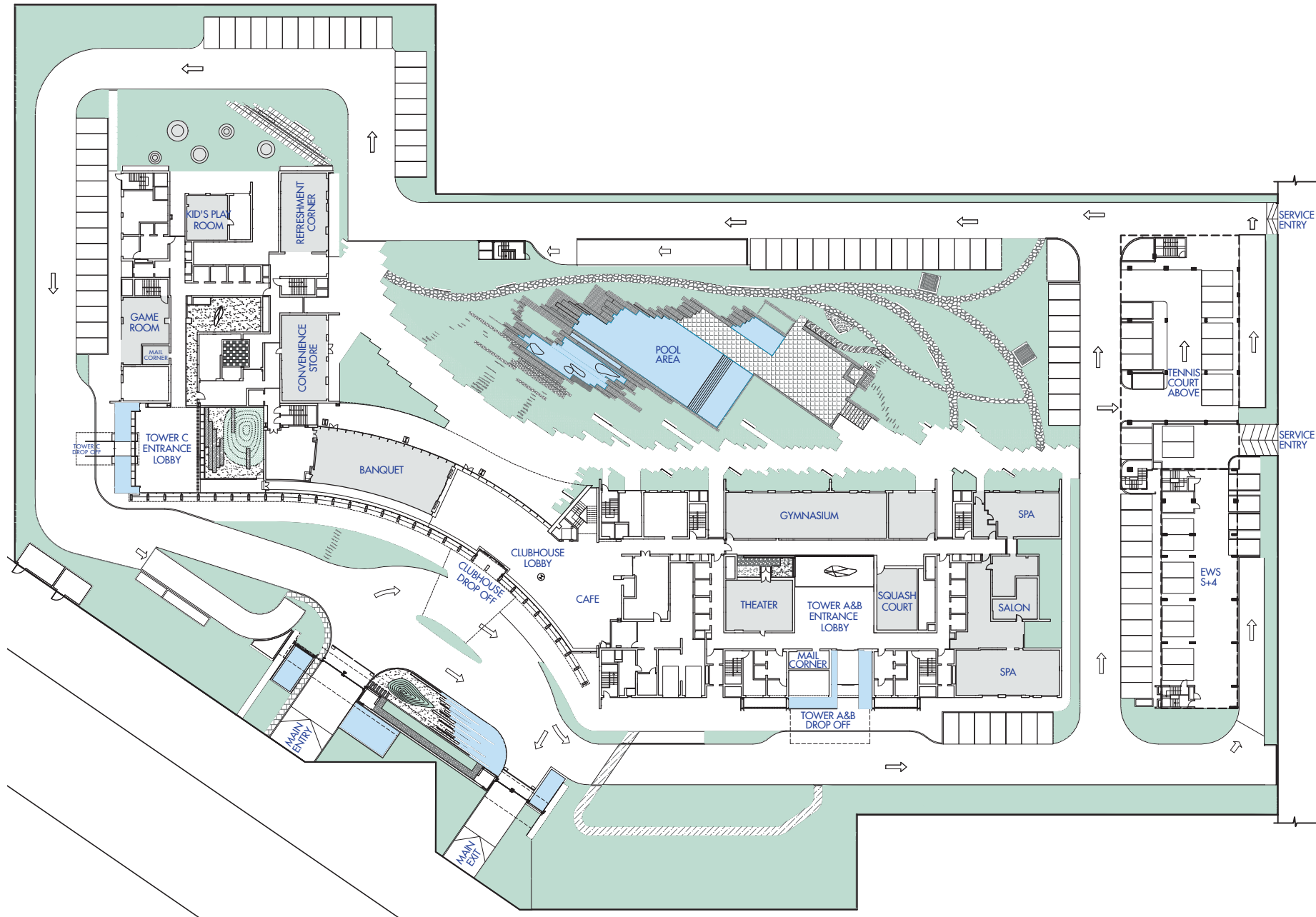
Carpet Area 2898.96 Sq. Ft (269.32 Sq. Mtr)
 Exclusive Area 4812.90 Sq. Ft (447.13 Sq. Mtr)
 Saleable Area 6353.03 Sq. Ft (590.21 Sq. Mtr)

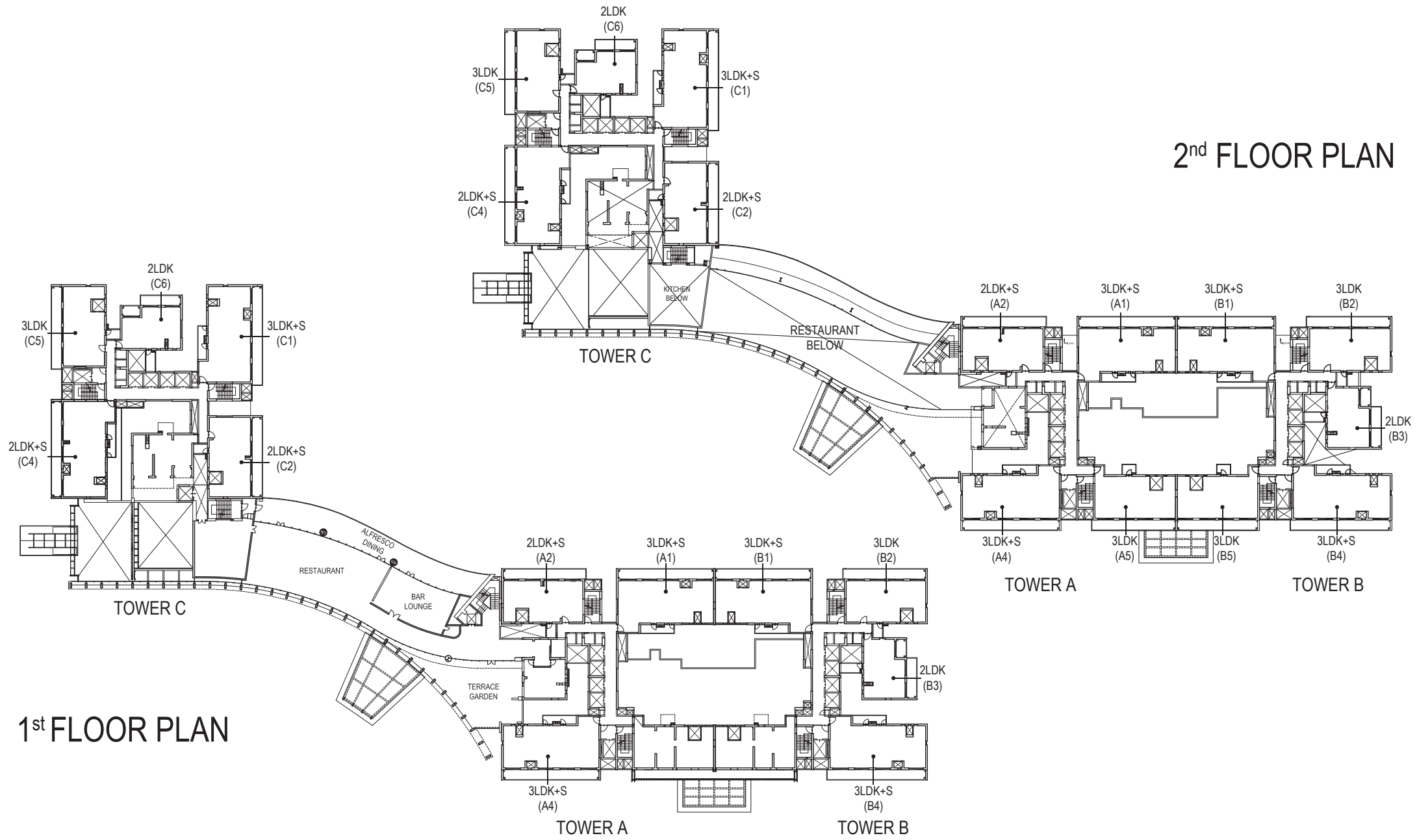


LOWER FLOOR PLAN



SITE PLAN WITH  GROUND FLOOR PLAN

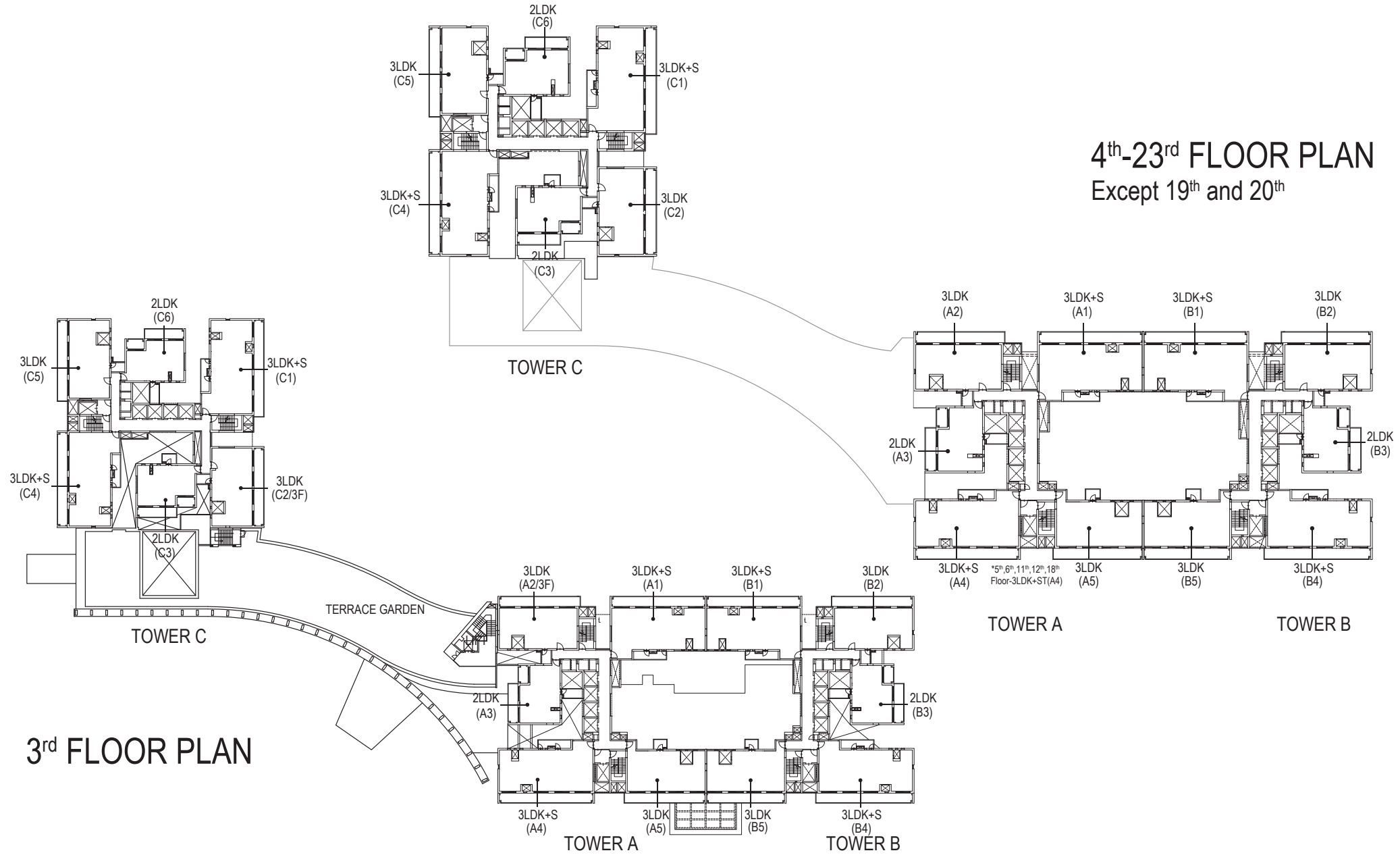




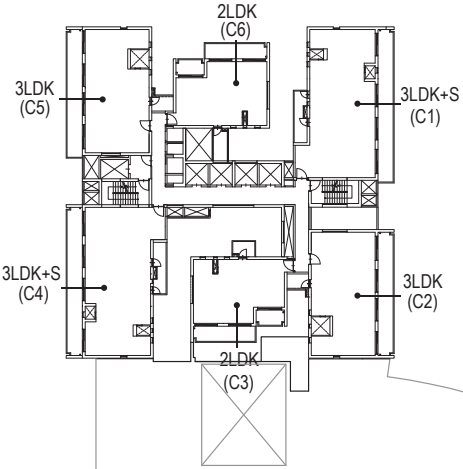
2nd FLOOR PLAN

1st FLOOR PLAN

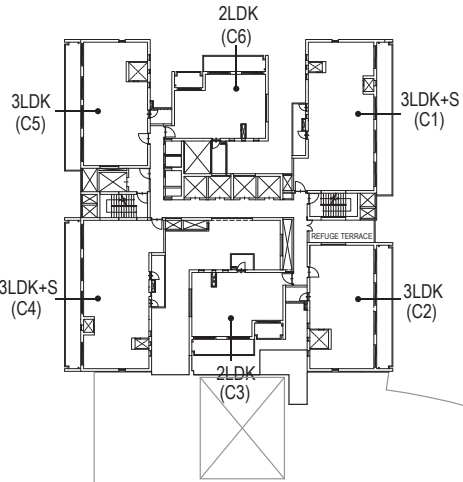
4th-23rd FLOOR PLAN
 Except 19th and 20th



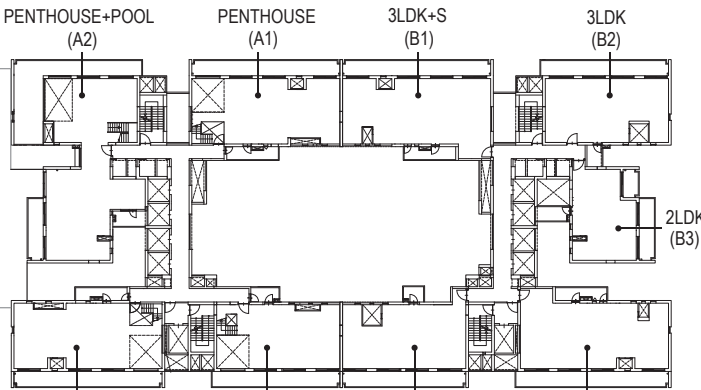
24th FLOOR PLAN



TOWER C



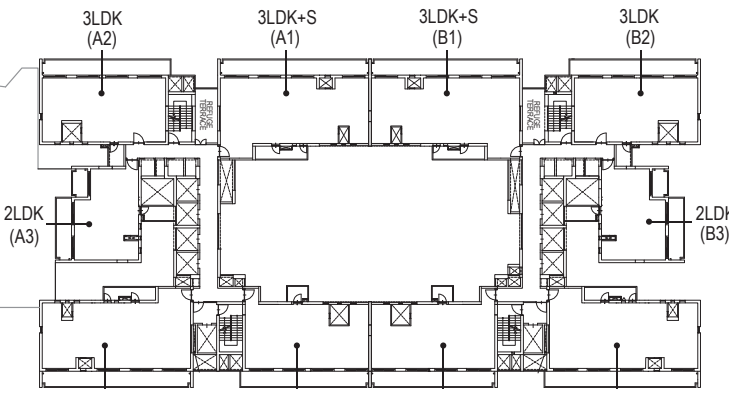
TOWER C



TOWER A

TOWER B

19th and 20th FLOOR PLAN

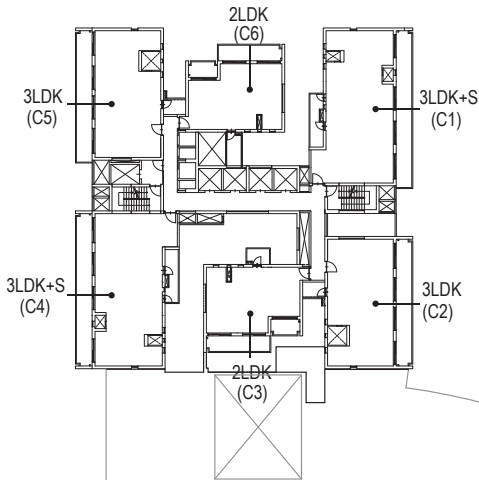


TOWER A

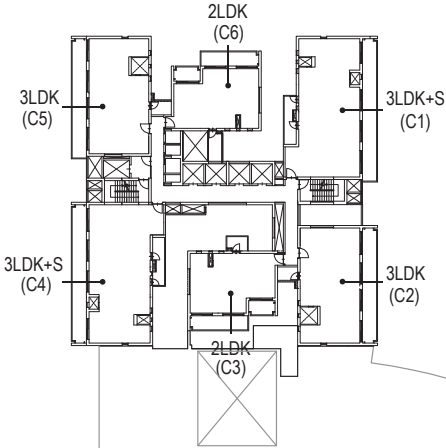
TOWER B

*19th Floor-3LDK+ST(A4)

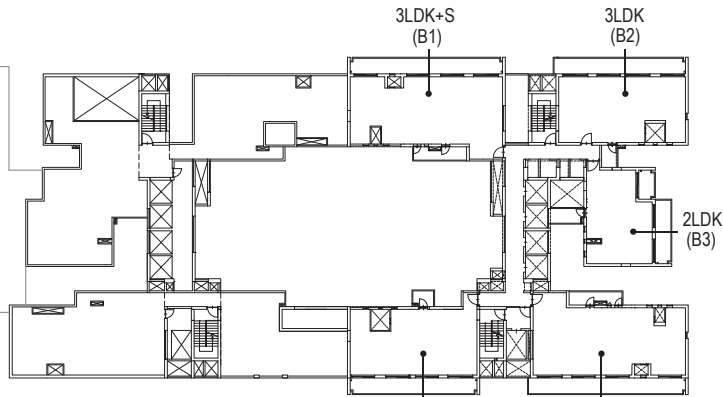
26th FLOOR PLAN



TOWER C



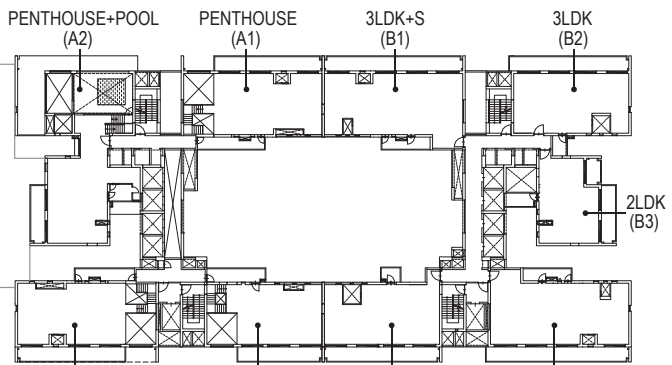
TOWER C



TOWER A

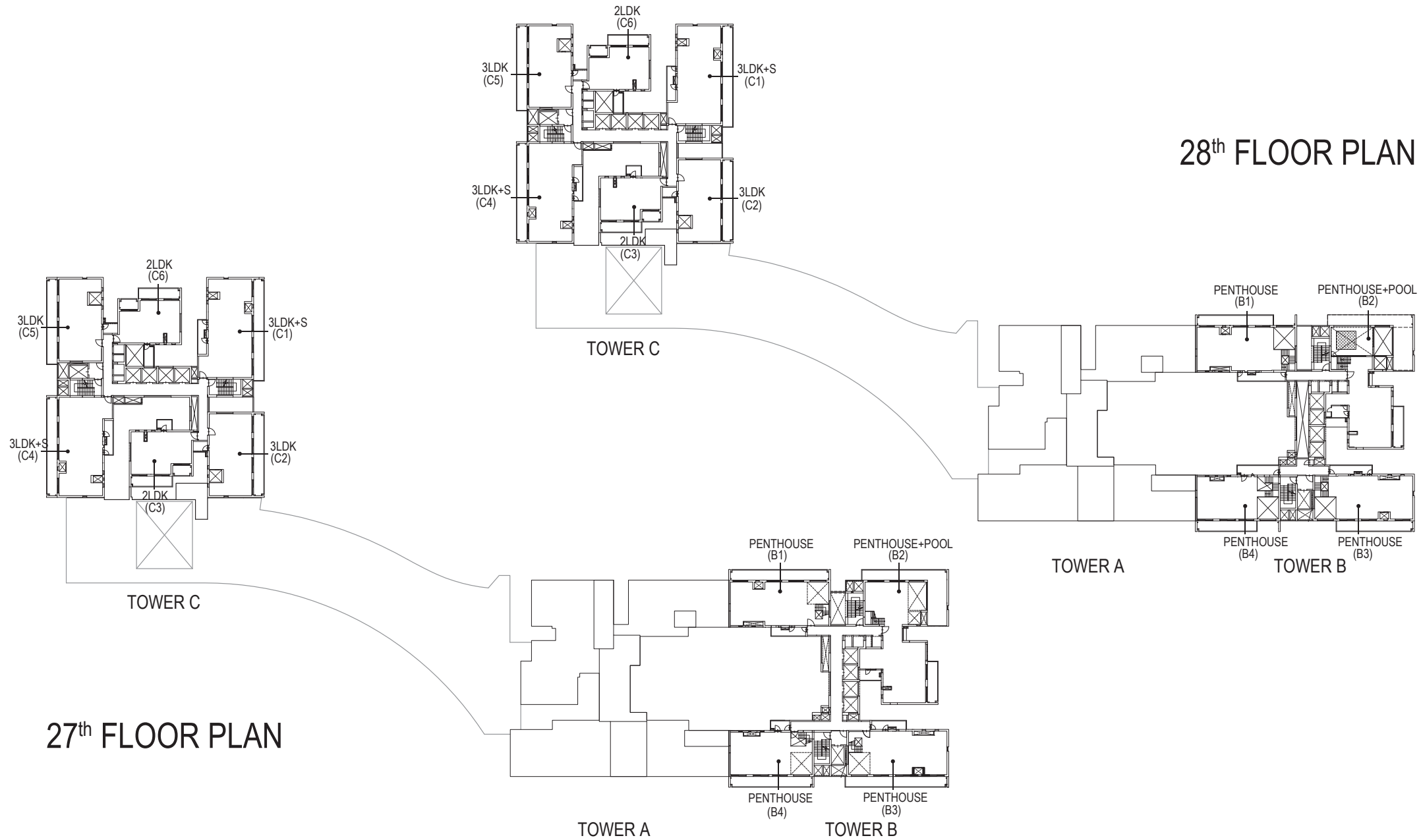
TOWER B

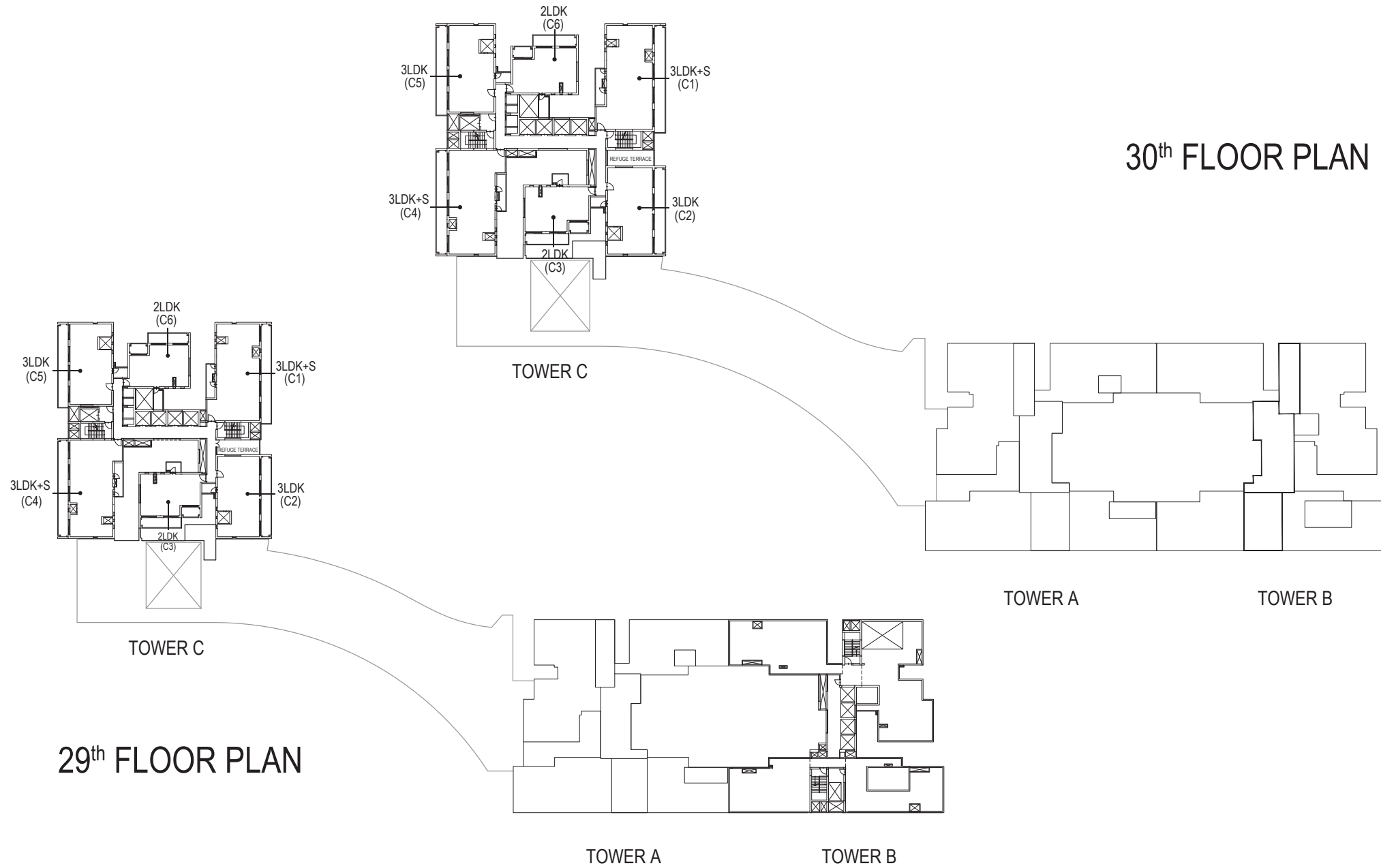
25th FLOOR PLAN



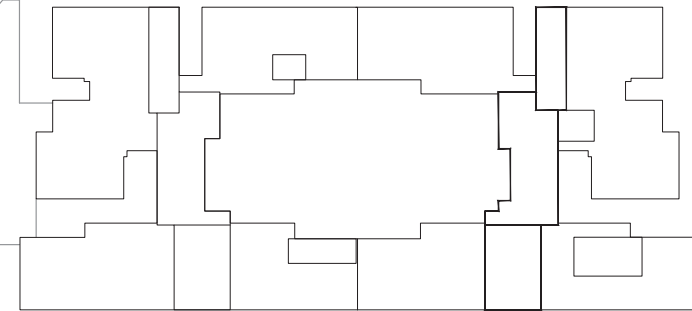
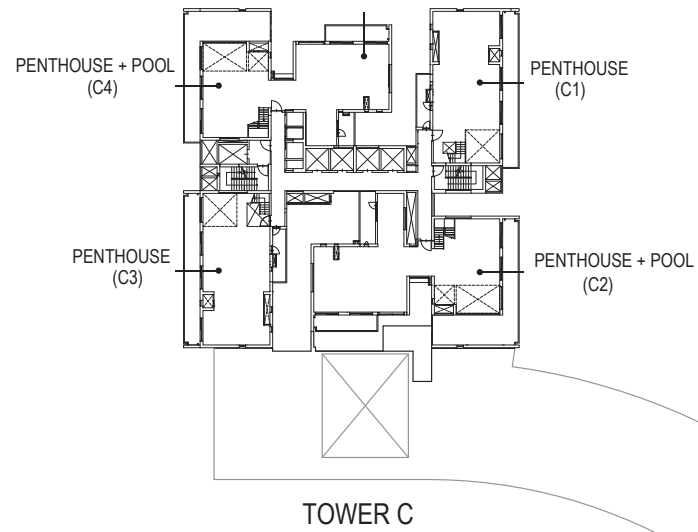
TOWER A

TOWER B



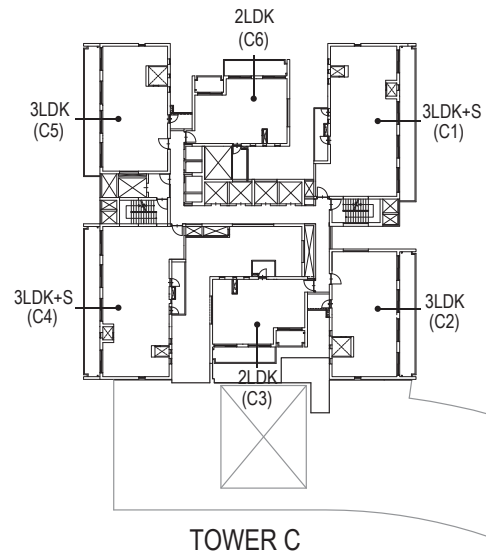


34th FLOOR PLAN

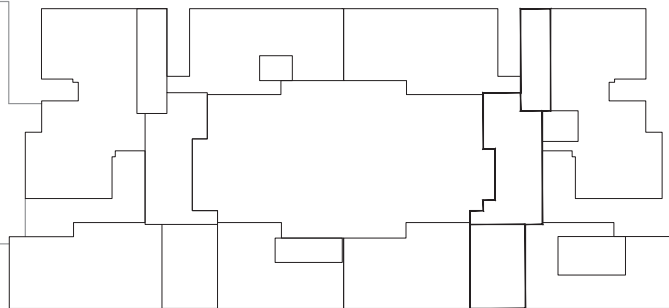


TOWER A

TOWER B

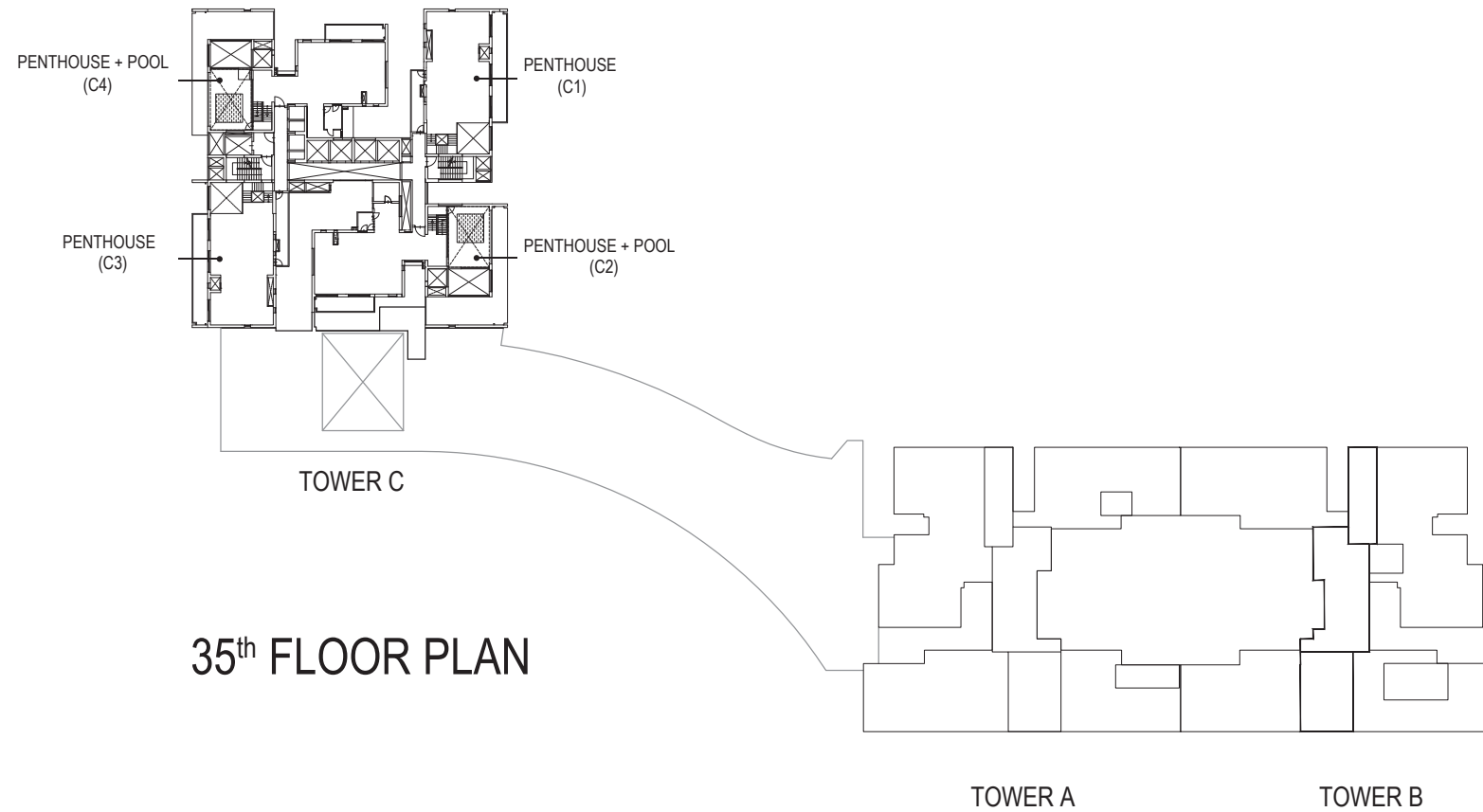


31st - 33rd FLOOR PLAN



TOWER A

TOWER B



35th FLOOR PLAN

SPEC SHEET

The materials used, create a perfect fusion of minimal design aesthetics and grand Indian hospitality, which showcase a life simply sophisticated.

APARTMENT SPECIFICATIONS:

LIVING/DINING/CORRIDOR

- Floor
Engineered wooden flooring
- Walls
Acrylic emulsion paint
- Ceiling (Living Dining)
Acrylic emulsion paint
- Ceiling (Corridor)
Acrylic emulsion paint on false ceiling

TV LOUNGE

- Floor
Engineered wooden flooring
- Walls
Acrylic emulsion paint
- Ceiling
Acrylic emulsion paint

KITCHEN

- Floor
Vitrified tiles
- Walls
Tiles and acrylic emulsion paint
- Ceiling
Acrylic emulsion paint on false ceiling
- Counter
Granite stone
- Fittings & Fixtures
Premium quality CP fittings, sink with drain board
- Appliances
Modular kitchen with hob and chimney

MASTER BEDROOM

- Floor
Premium quality Laminated wooden flooring
- Walls
Acrylic emulsion paint
- Ceiling
Acrylic emulsion paint

BEDROOM

- Floor
Premium quality Laminated wooden flooring
- Walls
Acrylic emulsion paint
- Ceiling
Acrylic emulsion paint

TOILET

- Floor
Vitrified tiles
- Walls
Vitrified tiles
- Ceiling
Acrylic emulsion paint on false ceiling
- Counters
Granite stone
- Sanitary Ware
TOTO or equivalent
- C.P fittings
Grohe or equivalent

SERVANT ROOM

Floor
Tiles

Walls & Ceiling
Oil bound distemper

Toilet
Anti-skid tile flooring, and oil bound distemper on walls

STUDY ROOM

Floor
Engineered wooden flooring

Walls & Ceiling
Acrylic emulsion paint

STORE ROOM

Floor
Tiles

Walls & Ceiling
Oil bound distemper

BALCONIES (MAIN)

Floor
Anti-skid Tiles

Walls & Ceiling
Exterior paint

Railing
Glass railing with SS balusters

BALCONIES (UTILITY)

Floor
Anti-skid Tiles

Walls & Ceiling
Exterior paint

Railing
MS Railing

DOORS

Entrance door
Modular door with veneer and polish (2.4m High)

Internal doors
Modular door with laminate (2.4m High)

Servant Toilet Door
Flush door with enamel paint (2.1m High)

EXTERNAL GLAZING

Aluminum glazed door and window

AIR CONDITIONING

VRV air-conditioning system with one outdoor module for the entire apartment

Ductable unit in Living Dining

ELECTRICAL FIXTURES & FITTINGS

Modular switches

LED lighting fixtures in balconies, toilet, kitchen and corridor

POWER BACK-UP

100% power back up

LPG PIPED GAS SYSTEM

Uninterrupted LPG gas supply to every Kitchen through a network of safe piping with individual gas meter

COMMON AREAS SPECIFICATIONS:

ENTRANCE LOBBIES

Floor
Stone flooring

Walls
Combination of stone, veneered paneling, metal and acrylic emulsion paint

Ceiling
Veneered paneling and false ceiling with Acrylic emulsion paint

All the lobbies are Air-conditioned

APARTMENT FLOOR LOBBIES

Floor
Vitrified tile

Walls
Combination of wooden laminated paneling and acrylic emulsion paint

Ceiling
False ceiling with Acrylic emulsion paint

All the lobbies are Air-conditioned

ELEVATORS

4 High speed passenger elevators with 1 service elevator in each tower. As a special security feature, each tower has 2 shuttle elevators from the basement

FIRE FIGHTING SYSTEM

A Synchronized firefighting system with fire sprinkles, hydrant, hose reel, smoke detector, heat detection and fire curtain system as per norms

Pressurized staircases, lift lobbies and lift Shafts for better fire safety

Disclaimer: Waterfall Residences has been registered via HARERA Gurugram with registration number: RC/REP/HARERA/GGM/2018/03 and is available on the website <http://www.harera.in/> under registered projects. | License No 39 of 2013 | Renewed Building Plan Approval vide Memo No.: ZP-915/Ad (RA)/ 2018/1568 dated 12.01.2018. Waterfall Residences is part of Group Housing Colony in Sector 36A, Gurugram, Haryana, India and is being developed on land admeasuring 2.197443 Hectares (5.43 Acres) owned by Bluejays Realtech Private Limited. Waterfall Residences consists of 433 no. of residential units, 77 no. EWS units, convenience shopping and community center/club. Developer: Krisumi Corporation Private Limited (registered development rights agreement dated 28.06.2017).

This brochure contains artistic impressions and no warranty is expressly or impliedly given that the completed development will comply in any degree with such artist's impression as depicted. The furniture, accessories, items, goods, additional fittings/fixtures, decorative items including finishing materials, specifications, shades, sizes and colour of the tiles, etc. shown in the image are only indicative in nature and are only for the purpose of illustrating/indicating a conceived layout and do not form part of the standard specifications/amenities/services to be provided. All plans and images shown in the brochure is indicative and are subject to changes at the discretion of the company or competent authority. The company shall not assume any responsibility of information provided by third parties and reliance shall be placed only on the information provided on the company's official website i.e <https://www.waterfallresidences.com>.

The project land has been mortgaged to Indusind Bank and NOC will be provided, if required, for sale, transfer and conveyance of the apartments/units to be constructed on project land.

Conversion Scale: 1 square mtr = 10.764 square ft.