



M3M India Private Limited



Paras Twin Towers, Tower-B,
6th Floor, Golf Course Road, Sector-54,
Gurgaon - 122002, Haryana, India



+91 124 4732000



+91 124 4732010

Sales Gallery/CRM Cell
The Experia, Golf Course Road (Extn.),
Sector-65, Gurgaon - 122002, Haryana, India



1800 123 3333



'M3M' to 56263

Site:
M3M Panorama
Golf Course Road (Extn.), Sector-65
Gurgaon - 122002, Haryana, India



info@m3mindia.com | sales@m3mindia.com



www.m3mindia.com | www.m3mpanorama.com

M3M
PANORAMA™
— EXCLUSIVE 36 SUITES —

“ ONLY
36 ”

SECTOR-65, GURGAON



75 Acres of Golfing Lifestyle

Wake up to views that take your breath away. Surrounded by greens and sprawling golf course view, your home will be that emerald isle of comfort and peace amidst a residential resort development.

These suites, a part of the 75 hectares of **M3M Golf Estate** combine contemporary and classic styles. The richly hued interiors of the suites exemplify luxurious living. The design of these suites are inspired by the best of “resort living”, with colour palettes and themes. The space and airiness of these suites complement the design philosophy. These smart living spaces ensure that the residents will have every luxury lavished upon them. And the low rise development all around assures unobstructed views all year round.



Exclusive. Only 36 suites

Exquisite luxury, craftsmanship, planning and preparation have led us to create such awe inspiring abodes. These privileged 36 Suites stand as pieces of art., far from the common yet close to open nature. When it comes to exclusivity, there is no matching the M3M Panorama Suites. And that shows in our choice of architect too, Arcop from Montreal, Canada, were brought in for their expertise and their full range of standard architectural services.



MAP NOT TO SCALE

M3M PANORAMA™
— EXCLUSIVE 36 SUITES —



- M3M Golfstate Fairway East
- M3M Panorama Suites
- M3M Polo Suites
- Future Development

Bird's Eye View

A bird's eye view of the perfect plan. Wake up to a breath taking view. Exquisite luxury, craftsmanship and preparation have led us to create such an awe aspiring abodes.



M&M
PANORAMA™
— EXCLUSIVE 36 SUITES —



Construction and Finishing by

No matter how well a project is planned, as long as it's not executed to perfection, it will remain a huge castle in the air with no foothold on the ground. That's why we involved Larsen and Toubro, better known as L&T and entrusted this crucial task to them.

L&T has an international presence, with a global spread of offices. It continues to grow its global footprint, with offices and manufacturing facilities in multiple countries. Their expertise is as well founded as their business is diverse. From heavy machinery to construction, they have done it all. And the quality that L&T boasts of is impeccable. The finest material has been sourced and used to ensure a finish that's class apart. That makes the construction sturdy and durable, ensuring safety and peace of mind for the residents.

The quality of construction that's been brought in on this project is all set to create new benchmarks for the business everywhere!

Quality and Speed!



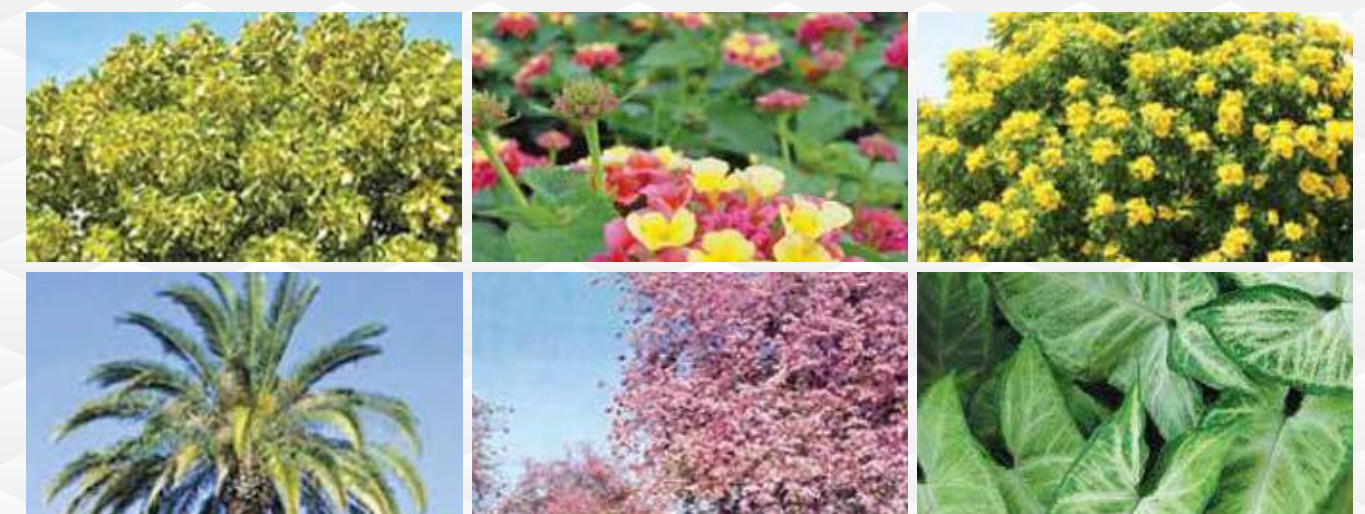
SCULPTURED LANDSCAPING by Geyer Coburn Hutchins (Seattle, USA)

The most important aspect of a healthy lavish lifestyle is the outside environment. Every detail is vital for one to really enjoy life. A view can completely make one's day. That's the beauty of landscapes at M3M Panorama Suites. Serene, pristine and stretching right up to the horizon. Making your comfort our top priority, Panorama Suites provides every tower with its own amenity area and club.



HOP ON AND LIFT OFF

Take a memorable ride on the beautiful Glass Elevator with panoramic views of the golf course. These high speed elevators are as much efficient as they give a beautiful view. Watch your guests be awe struck even before they have reached your home, after all with a project that is bestowing its patrons with utmost luxury nothing less than sheer delight suffices.



SHRUBS & GREENS

Seasonal trees and plants have been selected to provide a naturally beautiful setting. Colour co-ordinated and scented plants for the gardens & pathways of M3M Panorama Suites.



EXECUTIVE GOLF COURSE DESIGNED BY GOLF PLAN, USA

Golf Plan is a world-class land planning and landscape architectural firm comprising of professionals with diverse and complementary backgrounds in local, regional and international design fields. The professional staff maintains over 125 years of collective experience working together to complete projects in over 30 countries. They are continually committed to the highest quality of work, focusing on seeing a client's project from the early planning studies, through design phases and ultimately through the construction supervision process. The firm has an extensive portfolio working for both private and public clients in the land planning and landscape architectural roles.

Golf plan has crafted a 9-hole executive golf course par excellence, which can be seen from your very own balcony. So, just imagine waking up to the sprawling greens and play a game that's appreciated by a few. And mastered by even fewer. That's the beauty of this golf course - pristine, perfect and for a privileged few. Enjoy your game!



THOUGHTFUL URBAN PLANNING

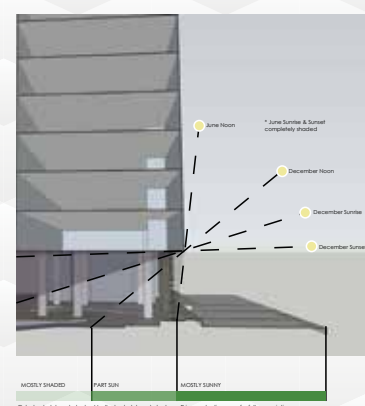
Strategically located, upscale community meeting and recreational havens have been planted on different levels of the towers. Multi-levels and floors have been planned to avoid monotony of blocks. Modern flat slab construction for complete flexibility of space planning for ease of running services and large glazing areas. Triple height stilts to provide uninterrupted views and 100% landscaping in this amenity filled community space.

M3M Panorama Suites takes into account the theme and philosophy of an enriched life. The overall architectural design provides for a safe circulation around the complex with approximately a 6 km jogging track and vehicle-free walkways. Each tower is designed to have an exclusive entrance area overlooking the splendid green spaces.

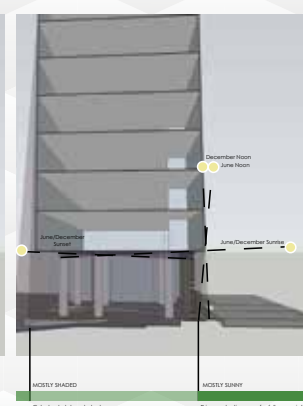
- A Drop Off
- B Clubhouse
- C Golf Course (Holes 1 & 9)
- D Lake
- E Pavilion
- F Event Lawn
- G Pedestrian Promenade
- H Golf Pump Station
- I Timber Deck

Sun and shadow studies have been conducted to ensure maximum benefit to the residents. The structural angles and viewpoints have been designed for optimum panorama and positive mood enhancing scenes.

East-west Orientation



North-south Orientation



MULTIPLE SPORTS ZONE

At M3M Panorama Suites we are endorsing a healthy lifestyle and for that we have a multitude of sports options like cricket pitch, lawn tennis, basketball, multi-activity field, badminton court, squash court, skating rink, fitness corner, outdoor exercise station, cycling track, climbing rock, jogging track/reflexology walk and aerobics/multipurpose court.



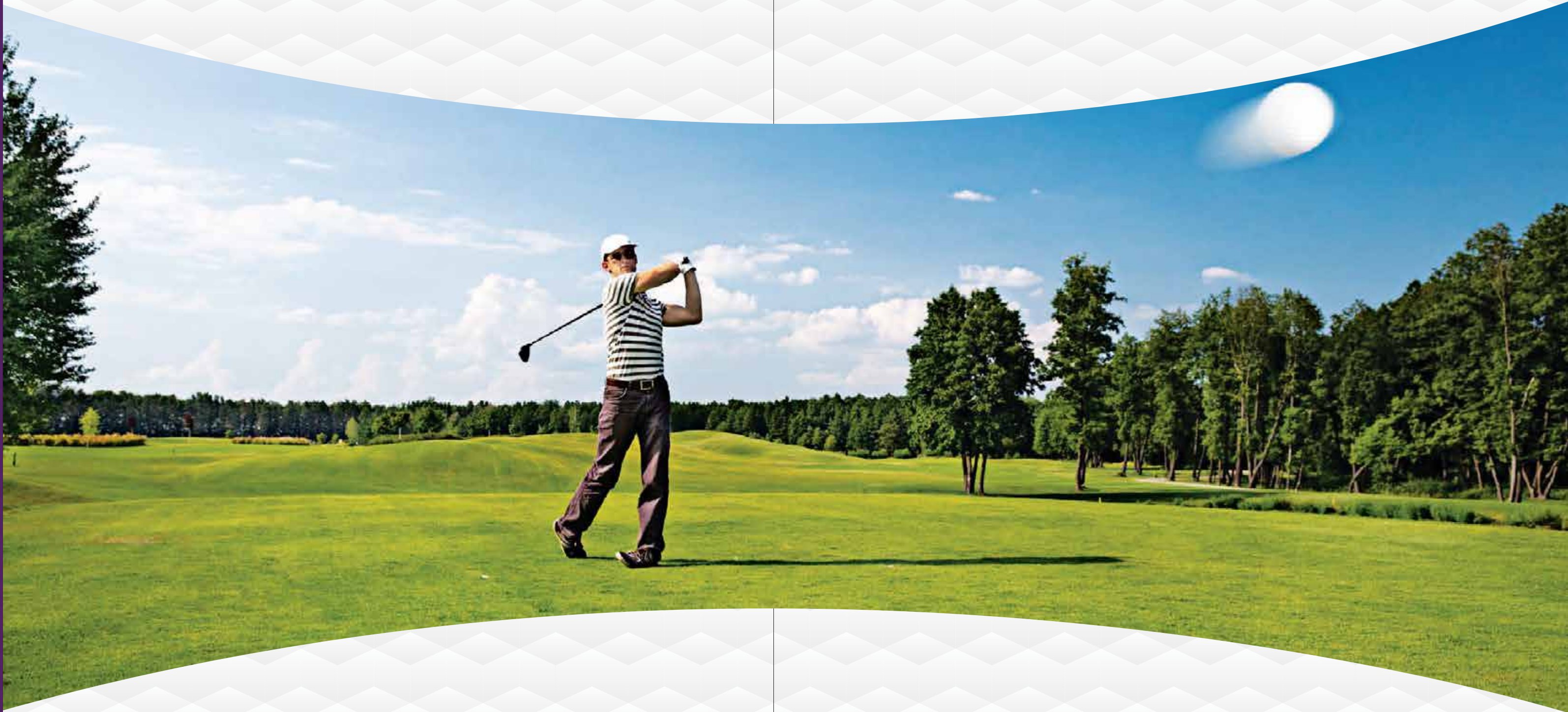
CHILDRENS PLAY AREAS

Dedicated Kids play area with tot lots, sand pits and water play areas that have wading pool and splash pool which will give your children a safe and healthy environment to have fun. Adventure play area for teenagers, skateboarding, trike track and play hills will definitely catch their fancy.

Mesmerising Interiors by Bilkey Llinas Design, USA

Given the niche segment of residents we have conceptualised M3M Panorama Suites for, we wanted to bring in specialists for the interiors. After all, when you're living in the lap of luxury, you'd want nothing to blemish the view, would you? That's why we got in touch with Bilkey Llinas Design from the US. They are people who have done it all. They have decorated homes, hotels, casinos, resorts, country clubs, spas and convention facilities, among others. After proving their mettle around the world and gathering oodles of praise, we got them to design the interiors for us. All in the effort to make sure that your home is perfect not just on the outside, but on the inside too!





For those who have risen above the rest, above the ordinary.

For those who deem luxury a necessity.

For those whom we cater, we have the most exclusive suites in the most lavish project of Gurgaon.

The M3M Panorama Suites, 36 of the most limited suites that re-define opulence and give a whole new meaning to exclusivity.

WELCOME TO

M3M
PANORAMA™
— EXCLUSIVE 36 SUITES —



Gateway To A World Less-ordinary

It has often been said that the first impression is the last impression. That's why it is essential to give those who live here and visit the residents to know at the very glance that this is a different world. People who have made this their abode are in a different league. These are people with fine achievements and finer tastes.

A befitting entrance has been crafted with a wide and long palm lined boulevard, lending itself to a broad entry and exit road. The 61 mtr. wide and 244 mtr. long central boulevard road culminates into an arrival water body with a steel sculpture that forms the nodal point between the two phases of the project and is complemented with a cascading water feature at the back. It gives the impression of a grand place where royalty resides. This is where dreams take off, headed towards unbridled skies. Towards an endless, seamless expanse. In simple words, it's grandeur at its best.



“The Art of healthy living...”

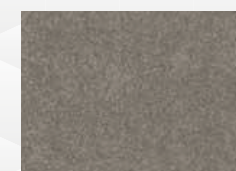
A fit mind resides in a fit body. And that's why there's a special rooftop jogging track here, along with other facilities, so that those who have come up in life never have to step down. Run, jump, hop or skip, there are a million ways to stay fit and stay in shape. After all, winners always stay ahead. And running is a great way to do just that!



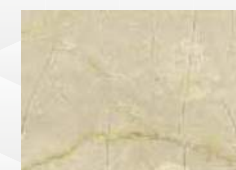
LIVING ROOM

The living rooms are designed keeping indulgence in mind. In your own private utopia, you'll have plenty of room to entertain your guests or just a quiet spot to enjoy the view. A 10 ft. high clear ceiling gives villa like feel. From the imported marble floors that epitomize grandeur to the immaculate fit & finish, this room couples relaxation and socializing at one grand place.

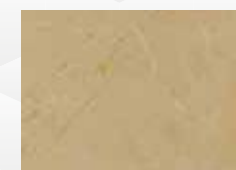
- ◆ Imported marble
- ◆ POP punning with acrylic emulsion paint on walls and ceiling
- ◆ Flush shutters with polished veneer and polished door frame
- ◆ VRV/VRF AC units
- ◆ Double glazing resulting in: heat barrier, energy efficiency and better sound insulation



Balcony Flooring-Desert Noche



Living/dining & Den-flooring
"Bottochino(Light)"



Entrance Lobby
Flooring-Antique Beige



MASTER BEDROOM

A spacious room adorned with the grandeur of wooden flooring and exquisite paint, your home will be a perfect picture of harmony between architecture and nature. Contemporary design is combined with obsessive detailing and high-quality finishes. Furniture and flooring, walls and windows; every detail is beautifully integrated to bring out a seamless flow.

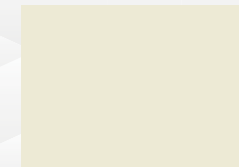
- ◆ Imported marble/engineered wooden flooring
- ◆ POP punning with acrylic emulsion paint on walls and ceiling
- ◆ Doors - high flush shutters & polished veneer
- ◆ VRV/VRF AC units
- ◆ Windows - Aluminium window frames with combination of double/single glazed panels resulting in: heat barrier, energy efficiency and better sound insulation



Balcony Flooring-Desert Noche



Living/dining & Den-flooring
"Bottochino(Light)"



Entrance Lobby Flooring-
Antique Beige



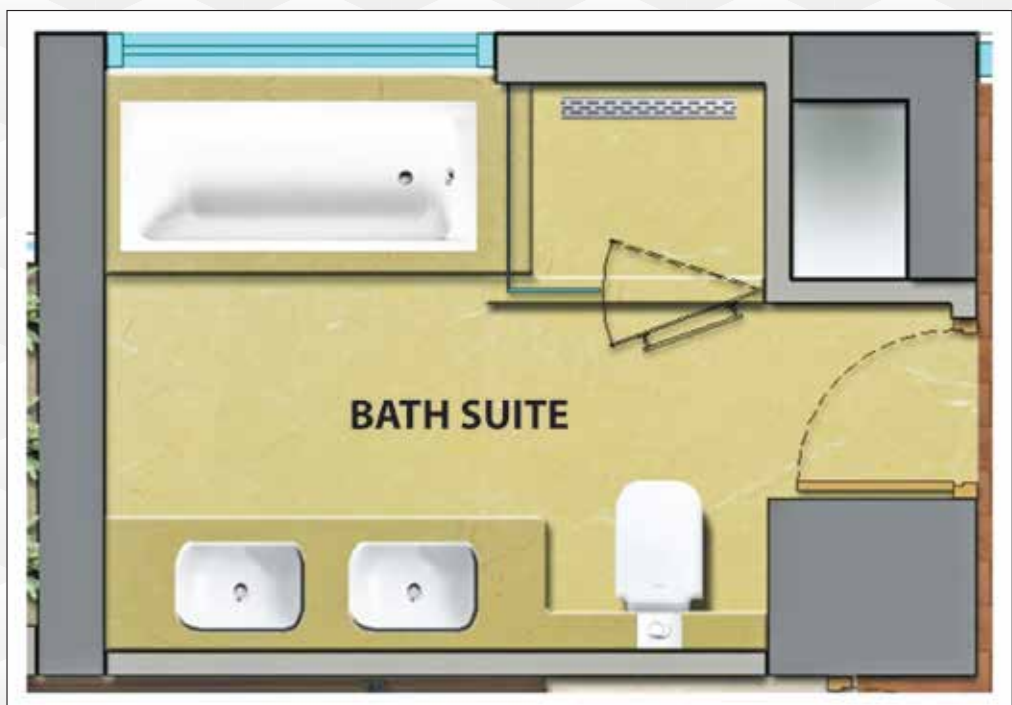
KITCHEN

Beautiful and functional these kitchens are crafted to enhance the experience of your family's favourite gathering spot. These kitchens come replete with modular kitchen, fridge, microwave oven, dishwasher and granite counter tops of top international brands. Our modular kitchen combines convenience with style. All the features have been carefully orchestrated to address the needs of a high-quality, contemporary lifestyle.

- ◆ Natural stone
- ◆ Combination of premium tiles and POP punning with acrylic
- ◆ emulsion paint on walls and ceiling
- ◆ Windows - Aluminium glazings
- ◆ Doors - high flush shutters & polished veneer
- ◆ Cabinet-Laminate
- ◆ Ceiling Paint
- ◆ Overhead Cabinet
- ◆ Wall Cladding-Tiles



- Kitchen Counter-
Chicku Pearl(Granite)
- Cabinet-Laminate-
Apple Wood
- Ceiling Paint-Linen
White
- Vitrified Tile Flooring-
Oasis Beige
- Cabinet-Laminate-
UV Coated Panel
- Wall Cladding-
Black Lacquar Glass



Imported Marble
Flooring-Antique Beige



Imported Marble Wall
Cladding-Antique Beige



Ceiling-Metal Ceiling

BATH SUITES

Our aesthetically pleasing washrooms complement the bedroom it belongs to. While the bath suites use imported marble stone, accessories and finishes include imported chinaware, bathtub with jacuzzi and marble counter top. Bathed in luxury, immerse yourself in our stylish bath suites.

- ◆ Imported marble in master bath suites • False ceiling with acrylic emulsion paint •
- ◆ Doors - high flush shutters & polished veneer
- ◆ Imported CP fittings with 5 fixtures in the master bath suites (His & Her sinks, Shower cubicle, WC and a Jacuzzi Tub) and 3 fixture bath suites in the balance bedrooms
- ◆ Provision of concealed geyser
- ◆ Windows - Aluminium glazings
- ◆ Imported Marble Flooring
- ◆ Imported Marble Wall Cladding



JOYFUL EVENINGS AT OUR EXCLUSIVE CLUB

Not just a destination but a statement of perfection, the Clubhouse has been created with emphasis on exclusivity, luxury and privacy. Separating the building into three principle volumes this Clubhouse delivers an experience of a lifetime. Divided into housing, entertainment, health and sports programs, the club's geometry makes it more convenient.



Every Dream Realized, Every Wish Fulfilled

“Concierge service at M3M Panorama Suites”



Promised your daughter that you will go to the Bolshoi Ballet in Moscow. No problem M3M Concierge Services will get it done. Enjoy the ‘Kremlin’ as well.



No matter where you are M3M Concierge Services will take care of your family back home. The M3M Concierge Service International Desk makes sure that any facility they need will be speedy and convenient.



Want to be there cheering your team in the English Football League, done. Be there when Manchester United goes against Liverpool.



When it's theatre time and ‘Phantom of the Opera’ is playing on the Broadway, it's time for M3M Concierge Services to make sure you experience this soul enriching experience.



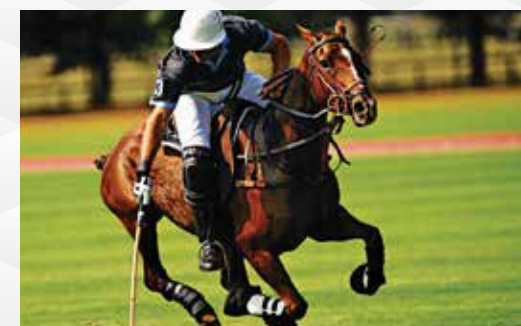
Be it a soulful sufi night at the club or one of the many events you would like to attend, our service will make sure you get the best seats in the house.



‘Ring out the old, ring in the new’, bringing in the New Year in style it's time for a cruise ship in the Bahamas. A special offer by the M3M Concierge Services.



As esteemed members of the M3M Concierge Club you will get exclusive invitation to the Delhi Fashion Week, have a gala time with your wife.



Polo season begins at M3M VIP box at the polo club. And you also get passes to the Prince Charles Polo Hunt at the ‘Reading’ near London along with two first class tickets on the British Airways to the UK.



Unmatched Amenities



We have created homes that harmonize with their surroundings, enhancing the quality of life for the people who live in them. At M3M Panorama Suites you will get exclusive amenities that are unsurpassed and have been designed to a standard commensurate for the best. Live serene with a 5-tier security system, video door phones for apartments and parking spread across 2 level basements. Defined pet areas to make sure that your pets are comfortable and get a place of their own. After all a man's best friend deserves his own place. BBQ pits for your weekends, it's a getaway in your own backyard. Rain water harvesting within the complex and every apartment has a Panic Alarm Button connected to central security room.

SPECIFICATIONS

Bringing together the finest materials to create the most stunning masterpiece.

AREAS	FLOOR	WALLS/CEILING	DOORS & WINDOWS/GLAZING	OTHER
Master Bedroom/Other Bedrooms	Master Bedroom: Imported Marble/Engineered Wooden Flooring Other Bedrooms: Engineered Wooden Flooring	POP Punning with Acrylic Emulsion Paint on Walls & Ceiling	Doors: 2.4 meters High Flush Shutters with Polished Veneer Windows: Upvc/Aluminium Window Frames with Combination of Double/Single Glazed Panels	VRV/VRF AC Units
Kitchen	Natural Stone	Combination of Premium Tiles & POP Punning with Acrylic Emulsion Paint on walls Ceiling: Acrylic Emulsion Paint	Doors: 2.4 meters High Flush Shutters with Polished Veneer Windows: Upvc/Aluminium Glazings	Designer Modular Kitchen, Fully Fitted With Premium Brand Hob, Chimney, Dishwasher, Microwave Oven and Refrigerator. Granite Counter Top, Stainless Steel Sink Imported CP Fittings
Master Toilets & Other Toilets	Imported Marble	Master Toilet: Imported Marble Other Toilets: Premium Tiles False Ceiling with Acrylic Emulsion Paint	Doors: 2.4 meters High Flush Shutters with Polished Veneer Windows: Upvc/Aluminium Glazings	Master Toilet: 5 Fixture Toilet With Premium Quality Imported Chinaware, Bathtub with Jacuzzi. Other Toilet: 3 Fixture Toilet with Imported Chinaware Imported CP Fittings, Marble Counter, Glazed Shower Enclosure, Exhaust Fan Vented to Exterior Mirror with Wall Mounted Vanity Lighting

AREAS	FLOOR	WALLS/CEILING	DOORS & WINDOWS/GLAZING	OTHER
Living Room/Dining/Foyer/ Family Room/Study	Imported Marble	POP Punning with Acrylic Emulsion Paint on Walls & Ceiling	Entrance Door: 2.4 meters High Flush Shutters with Polished Veneer and Polished Door Frame. Internal Doors: 2.4 meters High Flush Shutters with Polished Veneer Windows: Upvc/Aluminium Window Frames with Combination of Double/Single Glazed Panels	VRV/VRF AC Units
Utility/Servant Room	Ceramic Tiles	Oil Bound Distemper Paint	Doors: 2.4 meters High Flush Shutters with Polished Wood Veneer Windows: Upvc/Aluminium Glazings	Indian Chinaware and CP Fitting
Balcony/Terraces	Anti-Skid Vitrified Tile	Exterior Paint	Windows: Upvc/Aluminium Glazings	

POWER BACK-UP AND CCTV Surveillance



100% Power backup per apartment and treated water supply & all systems for fire safety as per norms.



CCTV for basements, ground floor lobbies, entry and exit to the development. Automatic boom barriers and manual gates at entry and exits, intelligent access control system, panic alarm button is installed in master bedroom and a door phone near apartment entrance, connected to the security control room/ management office.



Premium modular switches & sockets, copper wiring.



M3M Group stands for the 'trinity of Men, Materials and Money'. It is the core philosophy that inspires for excellence, culminating in absolute magnificence in every aspect of its character and ethics.



The M3M Life, a part of M3M Group's residential projects has always been versatile in its approach towards perfection. In the quest to present a flourishing premium lifestyle these apartment configurations range from well-planned and spacious duplexes to palatial 3-level penthouses while keeping the needs and requirements of our customers in mind. Keeping our customers ease and comfort upfront, we made sure that all our projects are strategically located in Gurgaon's top residential sectors and in vicinity to the corridor that will connect Delhi with Gurgaon, thus giving the best there can be in a complete package.

The World of M3M



A constant pursuit of joy in creation of a happy and networked residential society that is rewarding to the families and completely secure.



Forming prime commercial & retail spaces, most luxurious shopping destinations and the most sophisticated offices.



Redefining the aura of hospitality through unmatched services and unfathomable care to provide the utmost comfort and a fulfilling experience.



Developing the future, through world class and truly global workspaces for IT/ITES & SEZs.



Enhancing enlightenment of minds through holistic education and world class schools and institutions.



Establishing a global footprint through international associations and commendable tie-ups for technologically superior and world class infrastructure.



M3M CARE is the human face of the company that embodies the group's CSR activities. We believe in giving back to our employees, our community and to our natural surroundings.

Other M3M Projects



SECTOR-65, GURGAON



M3M POLO SUITES™
WHERE THE GENTRY RESIDE
SECTOR-65, GURGAON



SECTOR-107, GURGAON



SECTOR-70A, GURGAON



ONE-KEY
RESIDENTS
SECTOR-67, GURGAON



SECTOR-67, GURGAON



LIVING WITH ATTITUDE



SECTOR-67, GURGAON



SECTOR-67, GURGAON



SECTOR-66, GURGAON



SECTOR-66, GURGAON

LOCATION IS OF PARAMOUNT IMPORTANCE