

A detailed architectural rendering of a luxurious building entrance at dusk. The building features classical architectural elements like columns and a large, curved, illuminated canopy over the entrance. A red Bentley limousine is parked on the left, and several people in formal attire are walking on the checkered-tiled plaza. The scene is lit with warm interior lights and cool exterior ambient lighting.

PROJECT OVERVIEW

Agenda

- Project Overview
- Project USP
- Façade Renders
- Interior Renders

Project overview

Metric	Value
Land area	11 acres
Open area	70%
# of basements	3
# of parking/ apartment	2
# of Towers (total)	5
# of floors each tower	Tower A: G+43 Tower B: G+41 Tower C: G+22 Tower D: G+43 Tower E: G+42
# of Units	688
Club area	57000 Sq. ft
# of lifts in each tower	5

Project Overview

Club amenities	<ul style="list-style-type: none">- Gym- Swimming pool- Multipurpose hall- Badminton court- Spa/ Sauna- Restaurant/ Cafe- Aerobics room- Dance room
-----------------------	--

Unit types	Size
3BHK	2750-2850 Sq. ft
4BHK	3400-3600 Sq. ft
Penthouses	13500 Sq. ft

- Pricing band
Rs.20000 to Rs.22000 per sq. ft
- Offering competitive brokerage
- Payment plan
CLP

Notable features of the project

UNPARALLELED CONNECTIVITY & ACCESSIBILITY

- Direct access to Dwarka expressway
 - Opposite DPS
 - 15 min drive from IGI airport

YOUR UNIQUE HOME, PERSONALIZED FOR YOU

- Your unique design & mood -boards
 - Interior by global designers
- High quality leisure, recreation and entertainment

FIRST TIME EVER – HASSLE FREE, READY TO LIVE HOMES

- Equipped with elegant interiors and pre-installed connections



STATE OF THE ART DIGITALLY CONNECTED HOMES

- Modern home security
 - Digital concierge
- Advanced home automation system

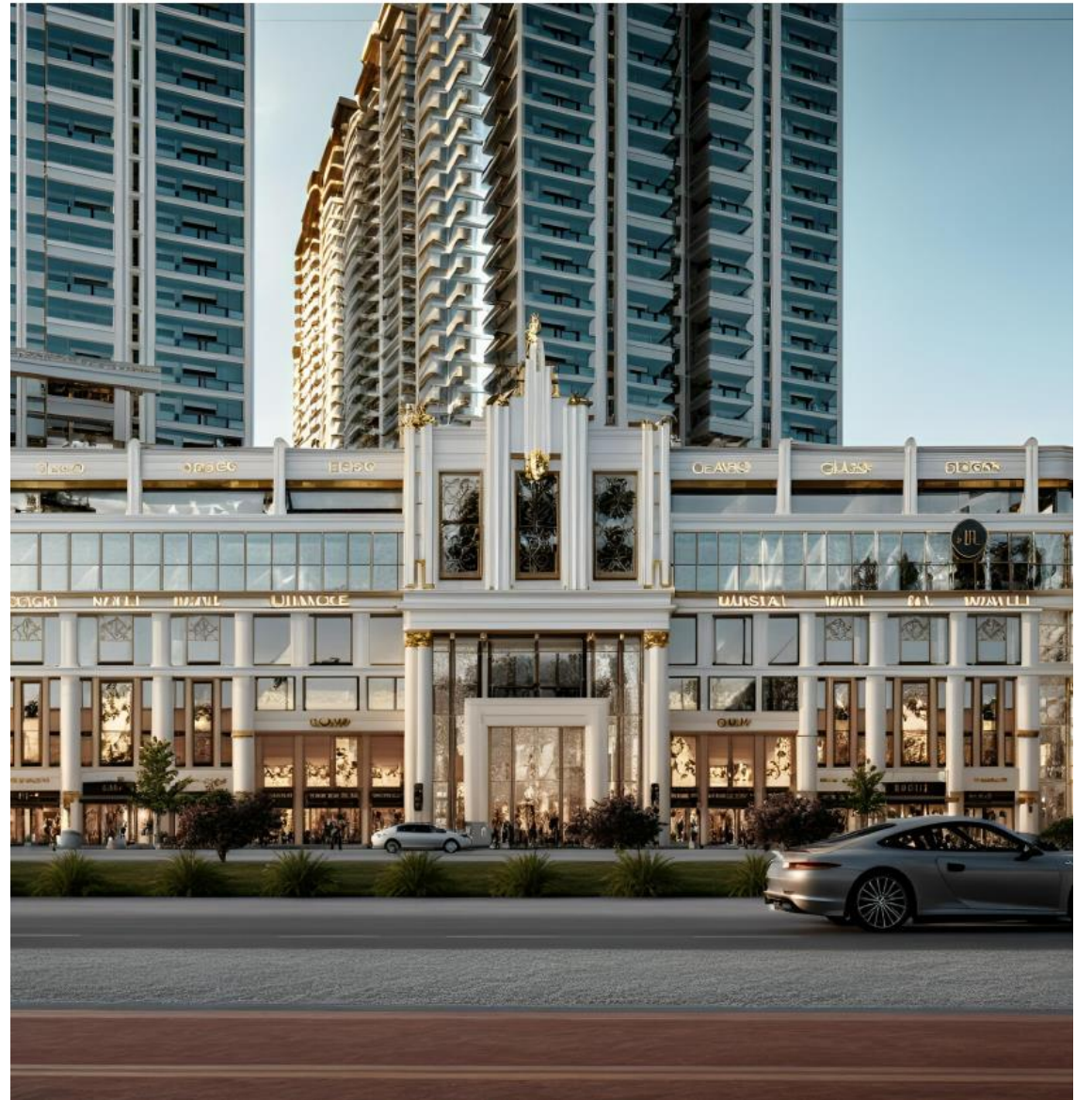
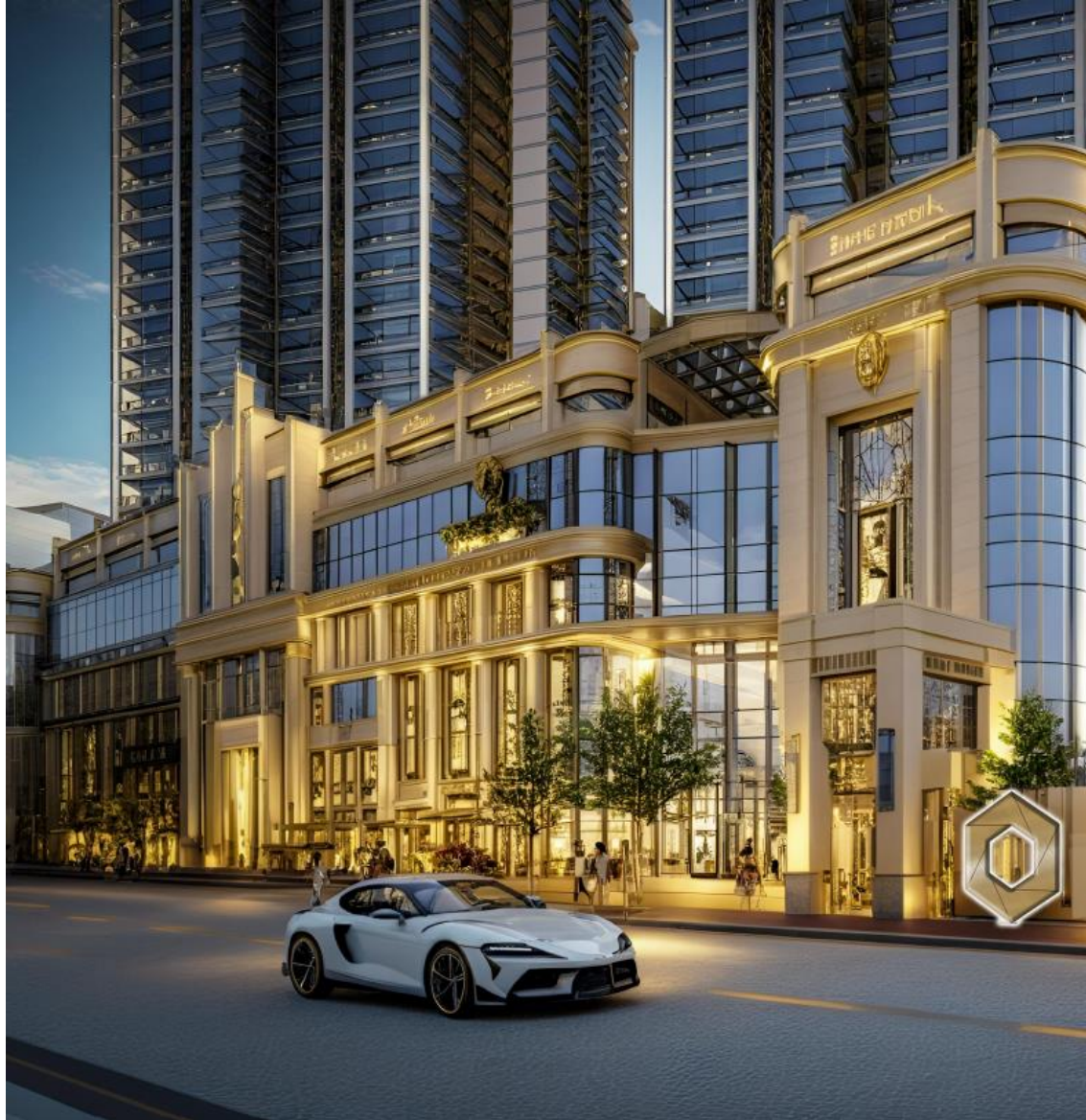
5-STAR LIFESTYLE WITH UNMATCHED SERVICES

- Seamless accessibility
- Luxurious accommodation
- On premise pharmacy, spa/saloon, grocery store, etc.

GREEN SUSTAINABLE HOME ENVIRONMENT

- Biophilic spaces
 - Green certification
- Safe and pollution free spaces with vehicular traffic free zone

















Thank you
