



*Godrej* | **PROPERTIES**



# A HISTORY OF TRUST.

---

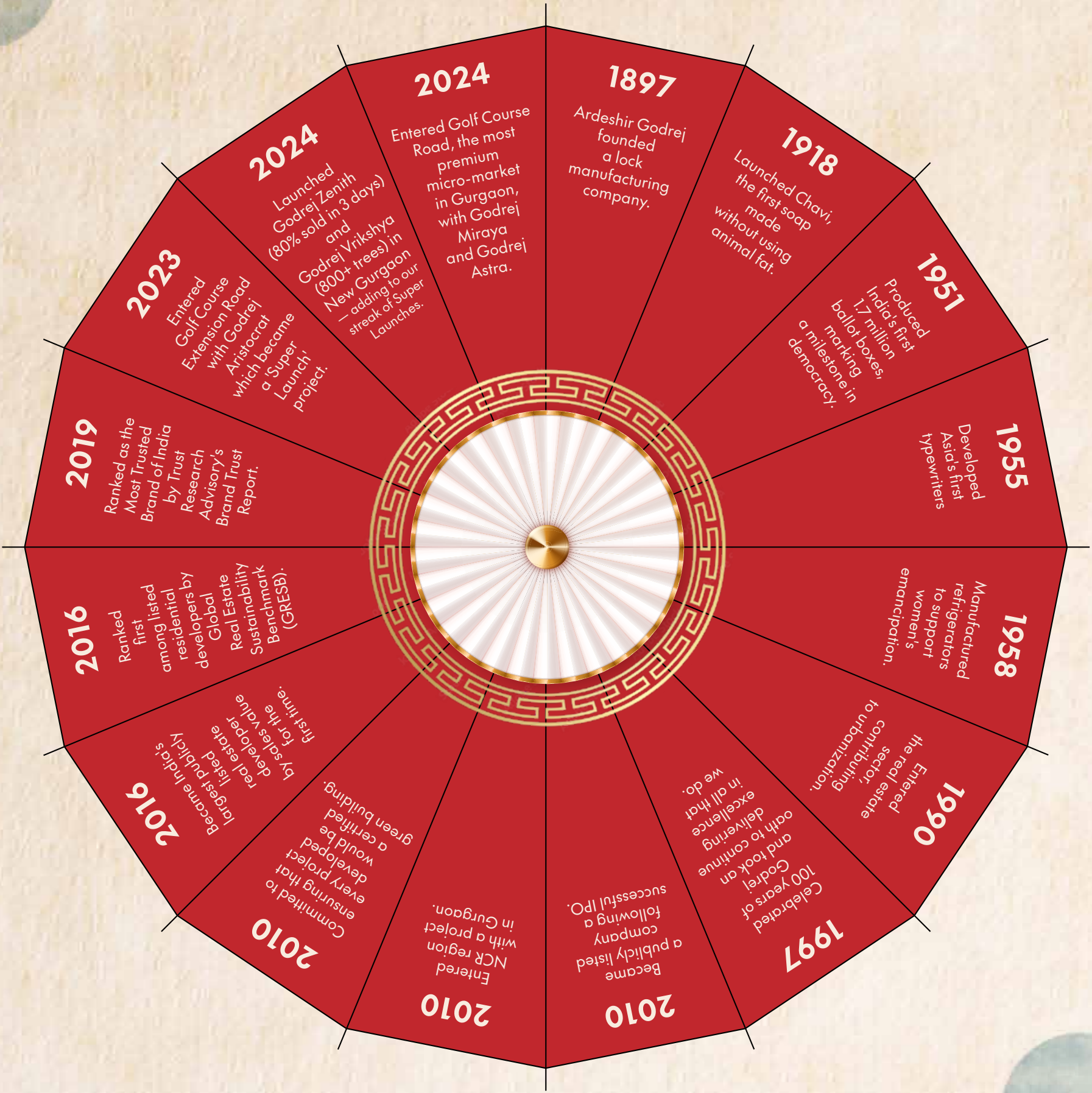
Since its inception in the midst of India's Swadeshi movement in 1897, the Godrej Group has stood as a timeless symbol of innovation and integrity. For more than 128 years, we have extended our reach globally, enhancing the lives of over 1.1 billion individuals through ventures spanning luxury real estate, diverse consumer goods, and multiple other sectors. With 116 projects—ongoing and upcoming—our portfolio reflects a steadfast commitment to building an enduring legacy. Driven by an unwavering dedication to quality and a clear vision of a sustainable future, we strive to consistently redefine and elevate the quality of every life we touch



Artist impression, not an actual site image.



# A LEGACY IN THE MAKING.





# A FUTURE OF SUSTAINABILITY.

Sustainability is integral to every phase of our construction value chain, from climate-resilient design and responsible sourcing to environmentally conscious construction and customer-focused handover procedures. We ensure our developments meet top quality standards and positively impact the environment and society by embedding ESG principles into our design philosophy, material selections, operational workflows, and post-handover interactions.



Active participant of UNGC since FY 23



Near-term emission targets approved by the SBTi



Recognised in the 2025 Dow Jones Best-in-Class Indices



Listed in the FTSE India 30/18 Capped index



5 Star rating in 2024 GRESB assessment. Ranked #2 Globally in Residential Multi-Family Sector




Recognised as a Supplier Engagement Leader with an A rating in 2024



ISO 14001:2015 certified across all operations.



INTRODUCING



GODREJ  
SORA  
SECTOR 53, GURUGRAM

YOUR PLACE IN THE SUN



## GOLF COURSE ROAD: WHERE PROSPERITY TOUCHES THE SKY.

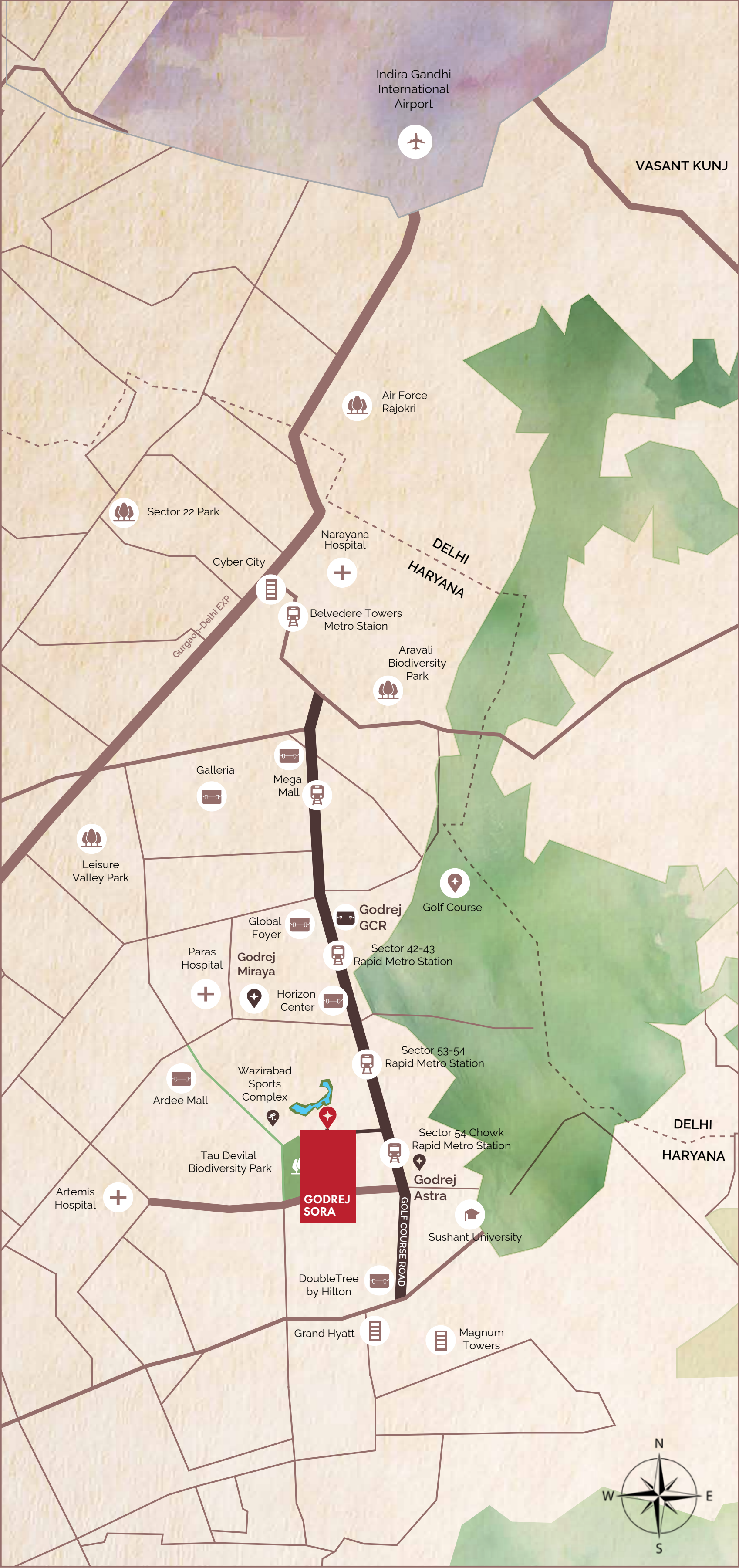
---

Golf Course Road is a symbol of distinction and grandeur, attracting an exclusive clientele that seeks the finest in living. It shines as a stellar address with its upscale properties and prime location, offering an extraordinary living experience that blends elegance, comfort, and accessibility.

With exceptional connectivity to key commercial hubs and leisure destinations, Golf Course Road stands as one of the most coveted addresses in the region. This road embodies a rare fusion of magnetic allure and fine living.







\*As per Google maps, actuals may differ



GODREJ SORA.  
NEAR EVERYTHING YOU NEED  
UNDER THE SKY.

| EDUCATIONAL INSTITUTIONS           | KMS | TIME (MIN.) |
|------------------------------------|-----|-------------|
| Heritage Xperiential School        | 2.6 | 7           |
| Shalom Hills International School  | 3.6 | 9           |
| Shiv Nadar School                  | 4.4 | 8           |
| The Sri Ram School                 | 5.1 | 12          |
| Kunskapsskolan School              | 5.7 | 11          |
| Scottish High International School | 7.2 | 17          |

| HEALTHCARE FACILITIES | KMS | TIME (MIN.) |
|-----------------------|-----|-------------|
| Paras Hospital        | 3.5 | 9           |
| Cloudbine Hospital    | 5   | 10          |
| Fortis Hospital       | 5.6 | 16          |
| Marengo Asia Hospital | 6.5 | 20          |
| Artemis Hospital      | 6.7 | 19          |
| Max Hospital          | 6.9 | 15          |
| Medanta The Medicity  | 9.8 | 28          |

\*As per Google maps, actuals may differ



GODREJ SORA.  
NEAR EVERYTHING YOU NEED  
UNDER THE SKY.

| BUSINESS CENTRES   | KMS | TIME (MIN.) |
|--------------------|-----|-------------|
| Horizon Centre     | 2.3 | 5           |
| Masterpiece        | 2.6 | 6           |
| Godrej Commercial  | 3.9 | 7           |
| Business Park      | 5.5 | 9           |
| HQ 27 Headquarters | 6.3 | 14          |
| Business Club      | 6.6 | 20          |
| Cybercity          | 8.5 | 14          |
| Worldmark          | 11  | 30          |

| MALLS              | KMS | TIME (MIN.) |
|--------------------|-----|-------------|
| Central Plaza Mall | 2.4 | 10          |
| South Point Mall   | 2.8 | 8           |
| Global Foyer       | 4.6 | 13          |
| Ardee Mall         | 5   | 14          |
| Mega Mall          | 6.4 | 14          |

\*As per Google maps, actuals may differ



WE INVITE YOU TO COME AND TAKE  
**YOUR PLACE IN THE SUN.**





GODREJ  
**SORA**  
SECTOR 53, GURUGRAM

Sora is Japanese for sky. And just like the sky, which brings us the light from the sun, Godrej Sora reflects the radiance emanating from the Land of the Rising Sun.

Located just steps away from Golf Course Road, it offers low-rise, serene surroundings right beside the bustling heart of Gurugram. And with just 244 residences and a design inspired by the Shibui philosophy, every aspect of it resonates with elegance and minimalism.

Step into a life of luxury and wellness in a place where every detail is designed with mindfulness.

Come home to your place in the sun.





**YOUR PLACE IN THE SUN**



Godrej Properties Limited ("Developer") is developing a residential group housing colony namely "Godrej Sora" ("Project") bearing plot no. GH-21 admeasuring 14569.20 square meters situated at Village Wazirabad, Tehsil Wazirabad, Sector 53, Urban Area Gurugram II, Haryana ("Project Land"). The Developer had acquired the said Project Land from Haryana Shehri Vikas Pradhikaran vide conveyance deed dated June 26, 2025 duly registered as document no. 6686 with the office of the Sub-Registrar, Wazirabad. The Project is registered with Haryana Real Estate Regulatory Authority, Gurugram ("HRERA") bearing Registration No. RC/REP/HARERA/GGM/976/708/2025/79 dated August 25, 2025 (website: Haryana Real Estate Regulatory Authority ([haryanarera.gov.in](http://haryanarera.gov.in))). The terms of allotment/sale shall be subject to (a) application form, allotment letter, agreement for sale and/or conveyance deed; (b) building plan and other approvals; and (c) occupation certificate(s). Building plan and approvals are subject to change and revision.

Viewers/Recipients are advised to exercise their discretion in relying on the information described/shown herein and only after thorough understanding about the Project and taking appropriate advice, take further decision regarding/in relation to the Project. This creative is purely conceptual, illustrative and used for indicative purposes only and not a legal offering. All specifications, amenities, surroundings, greens areas, etc. of the Project shall be as per the final agreement for sale between the Parties and subject to change, addition, deletion or amendment as may be decided by the Developer or as directed by any competent authority in the best interest of the development. The official website of the Developer is [www.godrejproperties.com](http://www.godrejproperties.com). Please do not rely on any other website